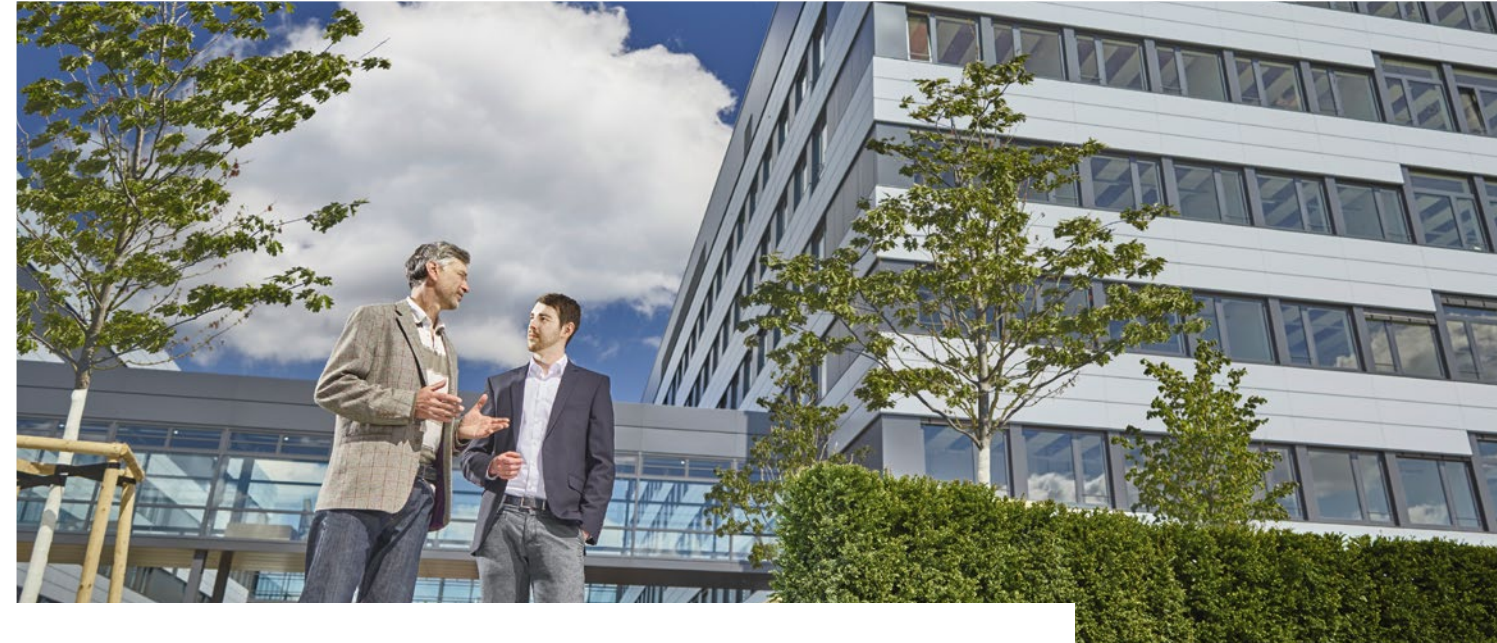


Product overview

Category	Product	Thickness [µm]	Adhesive (open side/covered side)	Peel adhesion [N/cm] ultimate (open side/covered side)			Temperatur resistance [°C]		Color
				Steel	PC	PE	(short/long)		
Foam	<a href="#">tesa® 65610 InvisiBond One Lift</a>	1250	Mod. acrylic	4	4	N/A	80/80	White	
	<a href="#">tesa® 65611 InvisiBond Cold</a>	1100	Mod. acrylic / waterbased acrylic	13	13	N/A	80/60	White	
	<a href="#">tesa® 65620 InvisiBond Safe Lift</a>	2000	Special adhesive	4	4	4	80/60	White	
Bond & Detach®	<a href="#">tesa® 70440</a>	400	Special adhesive	23	20	10	90/60	White	
	<a href="#">tesa® 70350</a>	500	Special adhesive	20	9	12	90/60	Transparent	
Filmic	<a href="#">tesa® 68562</a>	50	Mod. acrylic / acrylic	8,8/0,6	10,5/0,7	N/A	120/80	Transparent	
	<a href="#">tesa® 4917</a>	90	Mod. acrylic	11,4/4,1	11,0/6,8	4,1/2,3	120/80	Transparent	
	<a href="#">tesa® 4720</a>	100	Mod. acrylic	12,9/5,7	12/5,2	4,9/1,1	200/80	Transparent	
Cloth	<a href="#">tesa® 5938</a>	190	Synth. rubber	8,0/14,0	N/A	N/A	80/60	Black	
	<a href="#">tesa® 5939</a>	190	Synth. rubber	8,0/14,0	N/A	N/A	80/60	White	
	<a href="#">tesa® 51960</a>	248	Mod. acrylic / acrylic	6,6/13,7	N/A	3,5/5,1	120/60	White	



**Certifications**

Our company is focused on international quality, environmental, and occupational safety standards.

Please find more information regarding our certifications at: [www.tesa.com/certifications](http://www.tesa.com/certifications)



Removable adhesive tapes

Our product range of double-sided, removable adhesive solutions

tesa® products prove their impressive quality day in, day out in demanding conditions and are regularly subjected to strict controls. All technical information and data above mentioned are provided to the best of our knowledge on the basis of our practical experience. They shall be considered as average values and are not appropriate for a specification. Therefore tesa SE can make no warranties, express or implied, including, but not limited to any implied warranty of merchantability or fitness for a particular purpose. The user is responsible for determining whether the tesa® product is fit for a particular purpose and suitable for the user's method of application. If you are in any doubt, our technical support staff will be glad to support you.



# Secure bonding - Residue-free removal

New challenges in the focus of the industry



The requirements for double-sided adhesive tapes are big: Strong adhesion, safety and long-term durability are just as important as good appearance and processing simplicity. An additional property that counts for many users, is residue-free removability. In a special range of double-sided adhesive tape solutions, we bundle innovative products that can be removed without leaving any residue by no loss of adhesive strength or functionality.

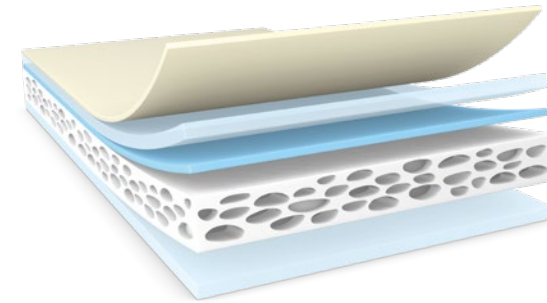
double-sided adhesive tapes in different product thicknesses and with different properties for use in different applications and requirements.

## Our special range for residue-free bonding and removing

Whether for signs, or labeling systems, trade show or display construction, point-of-sale design or applications in the electronics and automotive industries - removable double-sided adhesive tapes or even tapes that can be reapplied without any loss of quality save time and money. Our special product range includes

**Strong adhesive  
force, easily  
removable**

## Removable foam tapes



The foam tapes of the tesa® 656xx Removable range can be removed without leaving any residue. This is possible by the unique new product structure: Due to special reinforcing film, foam residues are a thing of the past.

- ✓ • High immediate and permanent adhesion
- ✓ • Foam carrier compensates for unevenness
- ✓ • Elastic layer absorbs shocks
- ✓ • No foam residue when removed on the covered liner side

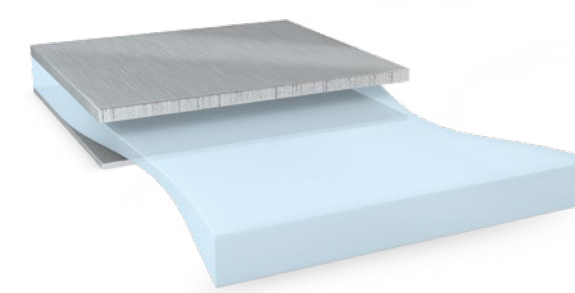
- ⚠ • Can be removed without residues just from one joining partner



### Possible application and use

- Bonding of signs as well as guidance and labeling systems
- Fastening in the area of exhibition stand construction
- Bonding of strips and profiles in the field of
- POS (price scanner rails, decorative trims, etc.)

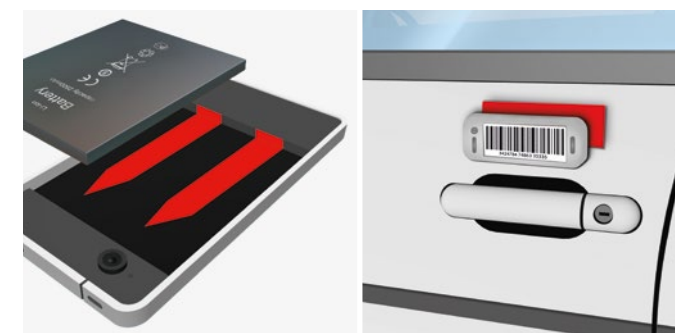
## Bond & Detach®



The tesa Bond & Detach® product family is based on a patented technology. The products are characterized by extremely high immediate and final adhesive strength combined with a residue-free and easy removability - by stretching.

- ✓ • Very high immediate and final adhesive strength even on on difficult substrates
- ✓ • Good noise damping properties
- ✓ • Shock and impact absorption
- ✓ • Residue-free removal from both joining partners by „stretching“
- ✓ • Sealing function and protection against dirt, dust and moisture

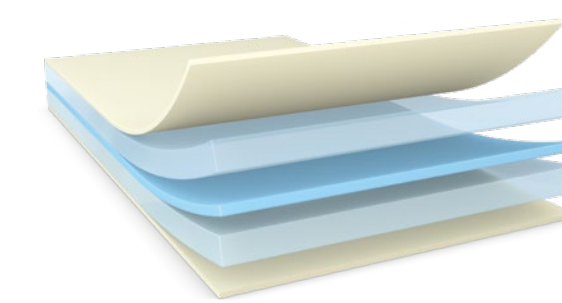
- ⚠ • Visible pull tab to ensure the removability



### Possible application and use

- Bonding of batteries, sensors and display components (electronic industry)
- Bonding of decoration and signs (exhibition stand construction, POS)
- Temporary fixation in the production process

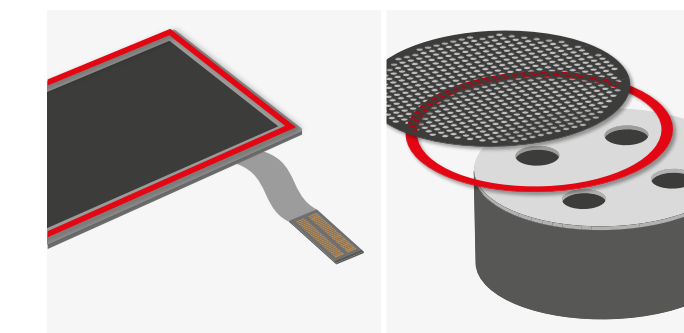
## Removable filmic tapes



The thin and flexible adhesive tapes with film backing are optimal for bonding on smooth surfaces. Different adhesive masses on both sides ensure the optimum properties of the adhesive tapes.

- ✓ • High dimensional stability and durability of the adhesive tape
- ✓ • Transparency of the adhesive tape
- ✓ • Very suitable for the production of die-cut parts
- ✓ • Good temperature and moisture resistance

- ⚠ • Not suitable for rough surfaces



### Possible application and use

- Pre-fixation of components (electronic industry)
- Bonding of LCD panels (electronic industry)
- Temporary fixation in the production process

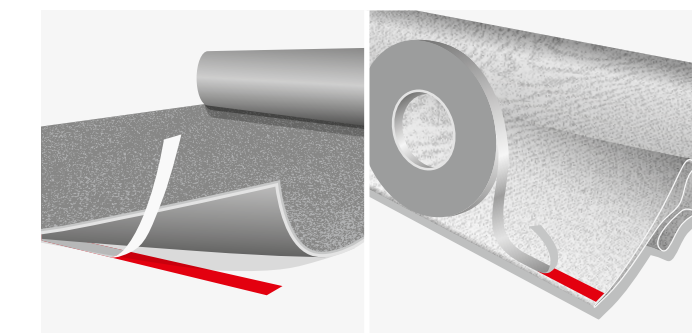
## Removable fabric tapes



The products are made of a tear-resistant, flexible fabric backing. tesa® 593x product range in black and white is characterized by high initial adhesive strength. tesa® 51960 has different adhesive mass systems for bonding even to sensitive surfaces.

- ✓ • High flexibility of the carrier
- ✓ • Very high abrasion resistance
- ✓ • Good tear resistance
- ✓ • hand-tearable

- ⚠ • Limited UV, weather- and shear resistant



### Possible application and use

- Carpet laying tapes in the field of exhibition stand construction
- Bonding of fixing parts in the field of prefab concrete construction
- Bonding of PVC coverings