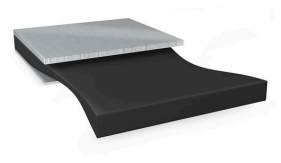




tesa® 76565 Bond & Detach



제품 정보

500 µm stretch release tape

제품 설명

Double sided specialty adhesive tape for reliable bonding of components over the lifetime of a car with the additional feature to release the bond whenever needed, leaving no residues behind.

Our Bond & Detach solutions offer the possibility to rework high value components during the production process enhancing process efficiency by decreasing reworking time, effort, and scrap cost. Furthermore, tesa® 76565 Bond & Detach enables the separation of bonds during or after the lifetime of a vehicle allowing for repairing, reuse or recycle of components.

The stretch-release mechanism used to debond our Bond & Detach needs no additional heat, cold or liquids that would endanger surrounding materials and leaves clean and residue-free substrates. This enables an easy reuse of the bonded high value components.

Its high temperature-, humidity- and UV-resistance allows for the usage in various automotive applications such as display mounting, bonds in ADAS components and EV systems. The deep black color eliminates issues with light leakage and allows for decent appearance in flexible designs as well as automated application.

특성

- High initial bonding strength
- High temperature, humidity and UV resistance
- Easy and reliable removability even after long bonding time
- Light blocking
- PFAS free

Applications

Target markets for tesa® Bond & Detach 76565 are automotive Display mounting, E-mobility and ADAS systems. Generally, it is especially recommended for the bonding of high value components.

E-mobility: Our stretch release mechanism is suitable for battery pack sealing, cell- as well as module-mounting.

Connected Interior: Focus applications in the automotive interior are display frame mounting, retainer mounting and FPC/PCB mounting.



tesa[®] 76565 Bond & Detach

제품 정보

Technical Information (average values)

The values in this section should be considered representative or typical only and should not be used for specification purposes.

제품 구조

• 기재 소재	없음	• 컬러	deep black
• 점착제 종류	합성고무	• 이형지 두께	75 µm
• 이형지 종류	siliconised PET	• 이형지 무게	110 g/m ²
• 총두께	500 µm	• 이형지 색깔	투명성

비고

For our comprehensive technical information sheet, please visit our website: <https://www.tesa.com/en-sg/about-tesa/press-insights/stories/bond-and-detach-automotive.html>

면책사항

테사에서 판매하는 제품들은 엄격한 품질관리를 통해 생산되고 있으며, 테사에서 제공하는 전문적인 정보들은 오랜기간의 경험을 기반으로 하고 있습니다. 관련 정보는 평균값에 근거하며, 특별한 용도에는 적합하지 않을 수 있습니다. tesa SE는 관련 정보의 명시적 또는 암묵적인 보증을 하는 것은 아니며, 이는 특별한 용도에 적합성 또는 상업성과 관련한 어떠한 암묵적인 보증도 포함하지 않습니다. 사용자는 제품을 사용하기 전에 적용부위에 적합한지를 검토하시기 바라며, 기타 문의사항이 있으시면 저희 직원에게 문의 바랍니다



최신정보는 왼쪽 링크를 클릭하세요. <http://l.tesa.com/?ip=76565>