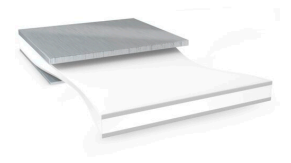




# tesa<sup>®</sup> 64825 Bond & Detach<sup>®</sup>



## Product Information

250µm White High Shock Stretch Release Tape

## Product Description

tesa<sup>®</sup> 64825 is a white stretch release tape with a special stretchable backing and a high shock adhesive

## Product Features

- Thickness: 250 µm
- Outstanding shock resistance
- High tack
- Very high bonding strength
- High tear resistance
- Easy removability by stretching the adhesive even after a long bonding time
- Residue free removability
- IPX8

## Application Fields

- Battery mounting
- Screen mounting in Notebooks and All-In-One PCs
- Permanent mounting of components in electronic devices
- Temporary fixation of components

## Technical Information (average values)

The values in this section should be considered representative or typical only and should not be used for specification purposes.

## Product Construction

- |                    |                       |                   |             |
|--------------------|-----------------------|-------------------|-------------|
| • Backing          | stretchable specialty | • Total thickness | 250 µm      |
| • Type of adhesive | synthetic rubber      | • Color           | white       |
| • Type of liner    | PET                   | • Color of liner  | transparent |

## Properties/Performance Values

- |                                     |           |                                     |           |
|-------------------------------------|-----------|-------------------------------------|-----------|
| • Removability after 14 days (23°C) | very good | • Static shear resistance at 40°C   | very good |
| • Residue-free removability         | yes       | • Temperature resistance long term  | 60 °C     |
| • Static shear resistance at 23°C   | very good | • Temperature resistance short term | 90 °C     |



# tesa<sup>®</sup> 64825 Bond & Detach<sup>®</sup>

## Product Information

### Adhesion to Values

• Aluminium (initial)	10 N/cm	• PE (initial)	10 N/cm
• Aluminium (after 14 days)	10 N/cm	• PE (after 14 days)	10 N/cm
• Magnesium (initial)	10 N/cm	• Steel (initial)	12 N/cm
• Magnesium (after 14 days)	10 N/cm	• Steel (after 14 days)	12 N/cm

## Disclaimer

tesa<sup>®</sup> products prove their impressive quality day in, day out in demanding conditions and are regularly subjected to strict controls. All information and recommendations are provided to the best of our knowledge on the basis of our practical experience. Nevertheless tesa SE can make no warranties, express or implied, including, but not limited to any implied warranty of merchantability or fitness for a particular purpose. Therefore, the user is responsible for determining whether the tesa<sup>®</sup> product is fit for a particular purpose and suitable for the user's method of application. If you are in any doubt, our technical support staff will be glad to support you.



For latest information on this product please visit <http://l.tesa.com/?ip=64825>