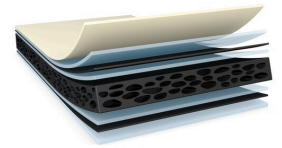




tesa® 66425

Product Information



tesa® 66425 280µm d/s Cuttable foam tape

Deskripsi Produk

tesa® 66425 is a black multilayer tape consisting of a soft PE foam backing equipped with PET reinforcement and easily reworkable adhesive on both sides. It is specially designed to enable rework at non-thermal condition for screen related application.

Product Features

- All in one solution provided
- Super soft foam for easy cuttability
- PET reinforcement for very good die cuttability and rework ability
- Strong push out strength
- Outstanding shear resistance withstand challenging environment conditions

Penerapan

- Screen and lens mounting in tablet and notebook
- Touch panel and display module mounting in tablet and notebook
- Demanding mounting applications
- All in one solution required application

Technical Information (average values)

The values in this section should be considered representative or typical only and should not be used for specification purposes.

Konstruksi Produk

- | | | | |
|-------------------|------------------|-------------------|-------------|
| • Penyangga | PE foam | • Warna | black |
| • Jenis perekat | modified acrylic | • Ketebalan liner | 50 µm |
| • Jenis liner | PET | • Warna liner | transparent |
| • Ketebalan total | 280 µm | | |

Properti / Nilai Kinerja

- | | | | |
|--|-----------|--|-----------|
| • Ageing resistance (UV) | very good | • Ketahanan terhadap geser statis pada suhu 40 # | good |
| • Ketahanan terhadap geser statis pada 23 °C | good | • Ketahanan terhadap kelembapan | very good |



tesa[®] 66425

Product Information

Adhesion to Values

- | | | | |
|--|----------|--|----------|
| • Daya rekat ke Kaca (awal) | 3.8 N/cm | • Daya rekat ke PC (setelah 14 hari) | 4.8 N/cm |
| • Daya rekat ke Kaca (setelah 14 hari) | 5 N/cm | • Daya rekat ke Baja (awal) | 4 N/cm |
| • Daya rekat ke PC (awal) | 2.9 N/cm | • Daya rekat ke Baja (setelah 14 hari) | 5.4 N/cm |

Additional Information

Adhesion to Values: "Initial" indicates 30mins of dwelling time.

Disclaimer

tesa[®] products prove their impressive quality day in, day out in demanding conditions and are regularly subjected to strict controls. All information and recommendations are provided to the best of our knowledge on the basis of our practical experience. Nevertheless tesa SE can make no warranties, express or implied, including, but not limited to any implied warranty of merchantability or fitness for a particular purpose. Therefore, the user is responsible for determining whether the tesa[®] product is fit for a particular purpose and suitable for the user's method of application. If you are in any doubt, our technical support staff will be glad to support you.



For latest information on this product please visit <http://l.tesa.com/?ip=66425>