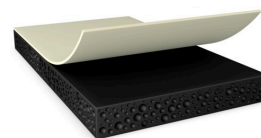




# tesa® 61054

## Product Information



250µm d/s black flexible acrylic foam tape

### Deskripsi Produk

tesa® 61054 is a double-sided black tape consisting of a high shock absorbing black acrylic foam.

### Product Features

- Thickness: 250 µm
- Very high shock performance
- Very high thermal and cold shock resistance
- Very high bonding strength for wide temperature range
- Good anti-repulsion properties to prevent lifting
- Waterproofing
- Light blocking

### Penerapan

- Display or touch panel mounting for electronic devices and infotainment systems
- Compensation of mechanical stress (e.g. gap filling and thermal elongation)
- Mounting of waterproof designs

### Technical Information (average values)

The values in this section should be considered representative or typical only and should not be used for specification purposes.

### Konstruksi Produk

- |                   |                  |                   |                      |
|-------------------|------------------|-------------------|----------------------|
| • Penyangga       | Acrylic          | • Warna           | black                |
| • Jenis perekat   | modified acrylic | • Berat liner     | 105 g/m <sup>2</sup> |
| • Jenis liner     | PET              | • Ketebalan liner | 75 µm                |
| • Ketebalan total | 250 µm           | • Warna liner     | transparent          |

### Berbagai macam produk

- |                           |                    |
|---------------------------|--------------------|
| • Ketebalan yang tersedia | 200, 250, 300, 400 |
|---------------------------|--------------------|

### Properti / Nilai Kinerja

- |  |           |  |           |
|--|-----------|--|-----------|
| • Ageing resistance (UV)               | very good | • Durasi ketahanan suhu jangka pendek            | 180 °C    |
| • Durasi ketahanan suhu jangka panjang | 90 °C     | • Ketahanan terhadap geser statis pada suhu 40 # | very good |



# tesa® 61054

## Product Information

### Adhesion to Values

- |  |           |                                       |           |
|--|-----------|---------------------------------------|-----------|
| • Daya rekat ke Aluminium (awal)           | 8.5 N/cm  | • Daya rekat ke PC (awal)             | 14 N/cm   |
| • Daya rekat ke Aluminium (setelah 3 hari) | 15.5 N/cm | • Daya rekat ke PC (setelah 3 hari)   | 28.7 N/cm |
| • Daya rekat ke Kaca (awal)                | 17 N/cm   | • Daya rekat ke Baja (awal)           | 16 N/cm   |
| • Daya rekat ke Kaca (setelah 3 hari)      | 18.5 N/cm | • Daya rekat ke Baja (setelah 3 hari) | 19 N/cm   |

### Disclaimer

tesa® products prove their impressive quality day in, day out in demanding conditions and are regularly subjected to strict controls. All information and recommendations are provided to the best of our knowledge on the basis of our practical experience. Nevertheless tesa SE can make no warranties, express or implied, including, but not limited to any implied warranty of merchantability or fitness for a particular purpose. Therefore, the user is responsible for determining whether the tesa® product is fit for a particular purpose and suitable for the user's method of application. If you are in any doubt, our technical support staff will be glad to support you.

For latest information on this product please visit <http://l.tesa.com/?ip=61054>