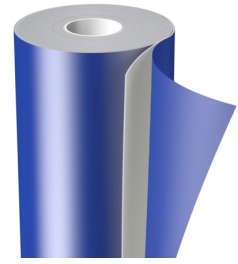




# tesa® 88021

## Product Information



2.1 mm (83 mil) tesaprint® Cushioning Foam

### Product Features

- The outstanding foam quality will ensure excellent print quality, especially in combination with thinner printing plates
- It provides long-term resilience and outstanding resistance against water and solvents.

tesa® 88021 is a grey closed-cell PE foam, equipped with an acrylic adhesive, covered by a blue film liner. It is especially designed to add a compressible layer to the compound of printing plate and carrier film when printing directly on corrugated board (Flexo post-print).

To use our tesaprint® Cushioning Foams, simply cut off the required foam size and remove the film liner to adhere the foam to the backside of your carrier film, after you have finished the printing plate mounting.

### Application Fields

Compressible substructure for post-print printing plates

### Product Construction

- Type of adhesive                      acrylic
- Backing material                      PE foam

### Product Properties/Performance Values

- Product design                      removable HDPE liner

### Disclaimer

tesa® products prove their impressive quality day in, day out in demanding conditions and are regularly subjected to strict controls. All information and recommendations are provided to the best of our knowledge on the basis of our practical experience. Nevertheless tesa SE can make no warranties, express or implied, including, but not limited to any implied warranty of merchantability or fitness for a particular purpose. Therefore, the user is responsible for determining whether the tesa® product is fit for a particular purpose and suitable for the user’s method of application. If you are in any doubt, our technical support staff will be glad to support you.



For latest information on this product please visit  
<http://l.tesa.com/?ip=88021>