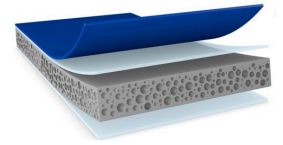


# tesa® ACXplus 79315

## Product Information



1.5mm double-sided acrylic foam tape for mounting of automotive exterior attachment parts

## Product Description

tesa® ACX<sup>plus</sup> 79315 is a double-sided acrylic foam tape for mounting of automotive exterior attachment parts. It is a triple-layer product, coated on both sides with special adhesives. Its high-performance adhesive creates an efficient and secure bond to typical automotive material of attachment parts (like PC and ABS) plastics and car body (various of clear coat). Its soft acrylic foam enhance the bonding performance on rough surfaces (like rib-surface).

In addition, our product also has excellent adhesive properties when it comes to 90°C high temperature resistance. Thanks to its viscoelastic acrylic foam core, tesa® ACX<sup>plus</sup> 79315 can absorb and dissipate dynamic and static loads.

- 0.8mm and 1.1mm thicknesses are available

## Product Features

- Excellent bonding performance on various clear coat
- Excellent adhesion to various plastic parts such as PC and ABS
- Good bonding stability with long term temperature resistance up to 90°C
- PFAS / PFOS free Product
- Efficient and robust application
- Viscoelastic acrylic foam core to compensate for different thermal elongation of bonded parts
- Excellent wet-out property
- High humidity and UV resistance

## Application Fields

tesa® ACX<sup>plus</sup> 79315 is suitable for permanent exterior mounting application. To ensure the highest performance possible, our aim is to fully understand your application (including the substrates involved) to provide the right product recommendation.

Example application are:

- trim mounting
- wheel arch and rock panel mounting
- PDC mounting
- Pillar appliques
- Door sill

# tesa<sup>®</sup> ACXplus 79315

## Product Information

### Technical Information (average values)

The values in this section should be considered representative or typical only and should not be used for specification purposes.

### Product Construction

• Backing	Acrylic foam	• Total thickness	1500 µm
• Type of adhesive	tackified acrylic	• Color	gray
• Type of liner	PE		

### Properties/Performance Values

• Ageing resistance (UV)	good	• Static shear resistance at 90°C	very good
• Chemical Resistance	good	• Temperature range	-40 to 90
• Cold-shock resistance	very good	• Temperature resistance long term	90 °C
• Humidity resistance	good	• Temperature resistance short term	120 °C

### Adhesion to Values

• ABS (after 3 days)	47 N/cm	• Steel (initial)	45 N/cm
• ABS (initial, after 1 minute)	45 N/cm	• Steel (after 3 days)	47 N/cm

## Disclaimer

tesa<sup>®</sup> products prove their impressive quality day in, day out in demanding conditions and are regularly subjected to strict controls. All information and recommendations are provided to the best of our knowledge on the basis of our practical experience. Nevertheless tesa SE can make no warranties, express or implied, including, but not limited to any implied warranty of merchantability or fitness for a particular purpose. Therefore, the user is responsible for determining whether the tesa<sup>®</sup> product is fit for a particular purpose and suitable for the user's method of application. If you are in any doubt, our technical support staff will be glad to support you.



For latest information on this product please visit <http://l.tesa.com/?ip=79315>