



Strong bond behind  
every window and door



tesa® solutions for the door and window industry

# Door applications

Contemporary residential entrance doors combine a clean look with new materials, durability, and good thermal insulation values. Our range of adhesive tape is based on a modern and efficient bonding method: our products offer a durable bond, support flexibility in design, and lead to faster processes.

## Door panel bonding

Flush door designs with frame-concealing panels are becoming increasingly popular. Implement your design concepts, achieve a durable bond, and benefit from a fast assembly process using our **tesa® ACX<sup>plus</sup> 707x series**.

- Temperature- and UV-resistant design
- Immediate bond without curing
- Proven performance in differential climate test
- Increased burglary protection (RC2 and RC3 certification possible)
- Sealing against dirt and moisture

## Decorative trims

Decorative elements such as metal trims or glass give standard doors their individual look: **tesa® ACX<sup>plus</sup> 707x Serie, tesa® 625xx Serie**

- Choose tesa® ACXplus for exceptional bonding strength
- Fast and clean bonding process
- Design flexibility due to range of thicknesses

## Kick plate

Metal kick plates protect the door panel from daily wear and tear. Use our tape to reliably bond metal sheets to the door panel: **tesa® ACX<sup>plus</sup> 7072**

- Thin design gap
- Levels out differing thermal expansions
- High bonding strength and cold shock absorption
- High resistance by dynamic loads

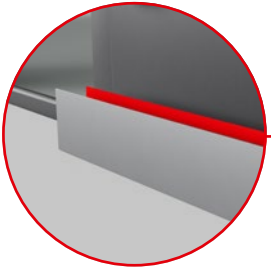
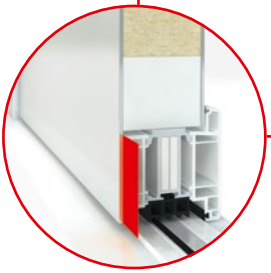


**tesa® ACX<sup>plus</sup> 7074 – ift proof of performance**  
Differential climate test with entrance door

- Report no. 14-002596-PR04

**tesa® ACX<sup>plus</sup> 7078 – ift proof of performance**  
Adhesive bond in accordance with ift guideline VE-08/1, Part 1

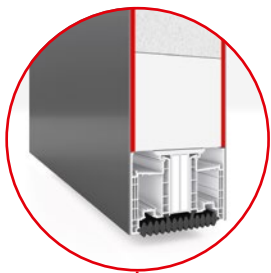
- Report no. 10-000666-PB01



## Insulation foam mounting

Modern door panels are built in a sandwich construction. Our scrim tapes efficiently bond cover panels and foam cores: **tesa® 66013 PET scrim**.

- Fast handling, high immediate adhesion
- Excellent adhesion to a wide range of surfaces
- Very low outgassing and smell



## Surface protection

Our products protect sensitive surfaces against scratches, plaster, or paint until the building is finally handed over to its owner. We recommend **tesa® 4848** and particularly **tesa® 50530** for paint finishes.

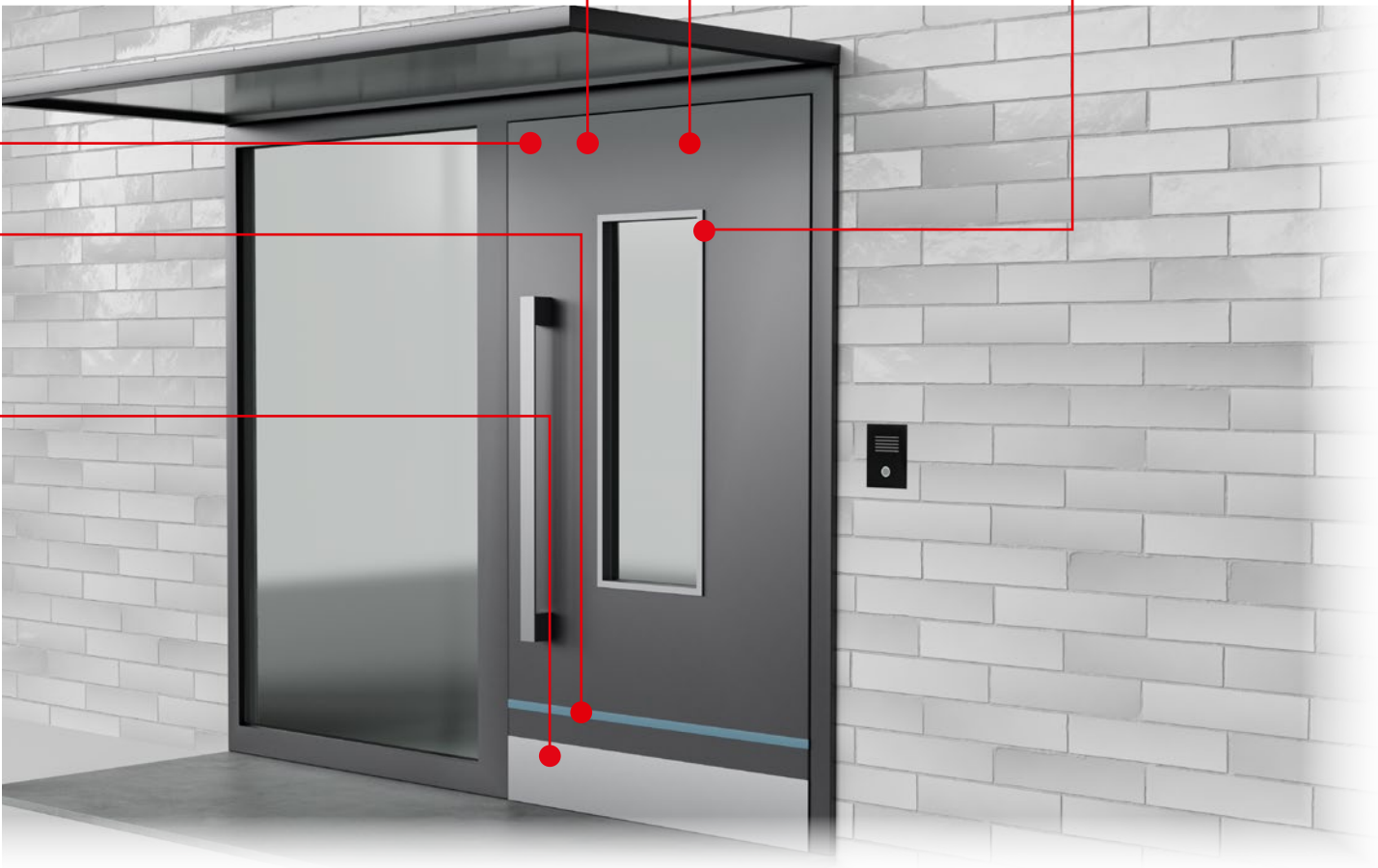
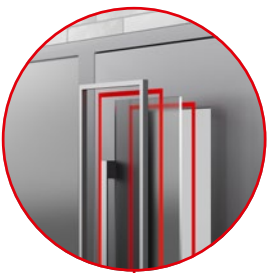
- Weathering resistance
- Clean removal



## Glass element bonding

Glass or window elements and cover frames can be assembled in a fast and flexible way using products from the **tesa® ACX<sup>plus</sup> 707x series**.

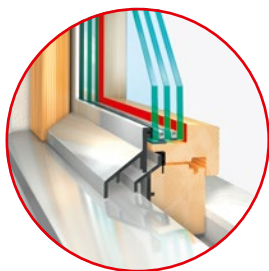
- Excellent bonding power and durability
- Levels out differing thermal elongation
- Various thicknesses available for different design gaps





# Window applications

Windows are an important building element in terms of design, energy efficiency, and convenience – and thus the subject of constant innovation. Within the window design process, adhesive tape has become a proven component and it offers advantages in terms of flexibility and assembly speed. Our work with customers, test institutes, and associations enables us to provide the application solutions you need.



### Frame cover bonding

Additional cover shells to the sash can improve aesthetics, thermal insulation, or weathering resistance. Choose from our tesa® ACX<sup>plus</sup> or PE foam assortment according to your specific requirements.



### Muntin bars

Achieve exceptional bonding and safe assembly with the tesa® 62512 or tesa® ACXplus 706x series.

- Resists climatic and mechanical loads
- Tested at ift Rosenheim



## New possibilities in dry glazing with tape

Make your customers enjoy more aesthetic windows that exude high quality. Not only does our range of tape enable a modern, frame-concealing design, it also improves the window's structural properties and protects against burglaries.

### tesa® 62612 – DryGlaze

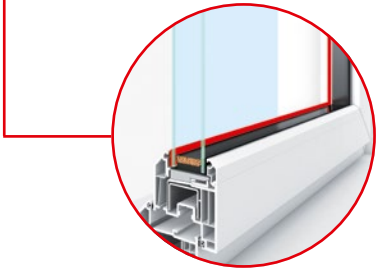
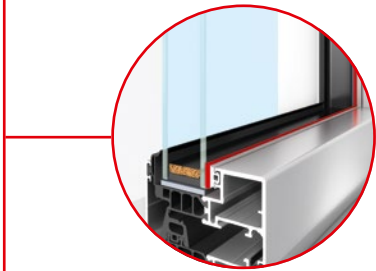
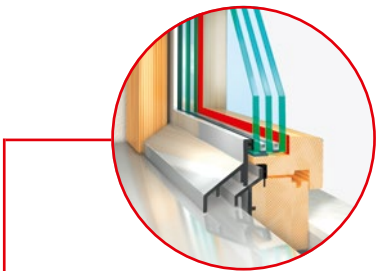
#### High-performance PE foam tape

- Specifically for residential PVC windows with glazing bead
- Adds stiffness to the window
- Good gap-filling properties

### tesa® ACX<sup>plus</sup> 707x-Serie

#### Acrylic foam tapes

- For designs without glazing bead
- Excellent weathering resistance
- Improved wind-load performance
- Give higher burglary resistance



## Dry glazing design options

### Wooden windows

- Simplified profile cross section
- Savings on frame material
- More lightweight, slimmer frame
- Improved burglary protection (RC2 certification possible)

### Aluminum windows

- Flush window design, slimmer frames
- Improved thermal insulation values
- For residential and commercial buildings

### PVC windows

- Reduced racking, thus better closing performance, leads to less maintenance
- Enables larger windows using conventional captive design
- Better burglary resistance



**tesa® 62512 – ift proof of performance**  
Adhesive bond of glazing bars to IGU  
• Report no. 14-002387-PR02

**tesa® 7066 – ift proof of performance**  
Adhesive bond of glazing bars to IGU  
• Report no. 14-002387-PR03



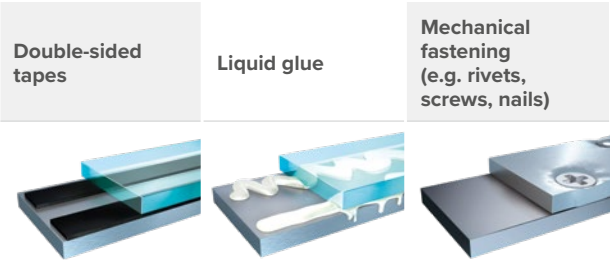
**tesa® 62612 – ift proof of performance**  
Adhesive bond in accordance with the ift guideline VE-08/2, part 1  
• Report no. 11-002533-PR04



# Advanced quality and individual Service

## Benefits of working with tapes

Pressure-sensitive adhesive tapes are a proven bonding technology that provides benefits in quality, assembly speed, and design. Our tape dispensers can be integrated into your extrusion line easily and with minimal adjustments. They outperform solutions such as liquid adhesives or mechanical fasteners in many ways.



|          |   | Double-sided tapes | Liquid glue | Mechanical fastening (e.g. rivets, screws, nails) |
|----------|---|--------------------|-------------|---|
|          |   |                    |             |   |
| Design   | Improved visual appearance – no damage to the material  | ••••               | •••         | •   |
|          | Invisible fastening – mounting of transparent materials   | ••••               | •••         | •   |
| Assembly | Fast application process – elimination of curing time and reduction of complexity   | ••••               | •           | ••  |
|          | Healthy working environment and clean production sites  | ••••               | ••          | ••  |
| Quality  | Compensation of irregular or uneven surfaces – gaps between bonded surfaces are eliminated                                    | •••                | ••••        | •   |
|          | Compensation of tension and stress dissipation – single bonding point with mechanical fasteners can lead to material breakage | ••••               | ••          | •   |
|          | Noise-dampening properties – sounds caused by vibration are eliminated  | ••••               | •••         | •   |
|          | Shock absorption  | ••••               | ••          | •   |
|          | Sealing function – tape seals and protects against dust and moisture  | ••••               | ••••        | ••  |
|          | Reduced risk of corrosion   | ••••               | ••••        | •   |

•••• Very good   ••• Good   •• Medium   • Low

tesa® products prove their impressive quality day in, day out in demanding conditions and are regularly subjected to strict controls. All technical information and data above mentioned are provided to the best of our knowledge on the basis of our practical experience. They shall be considered as average values and are not appropriate for a specification. Therefore tesa SE can make no warranties, express or implied, including, but not limited to any implied warranty of merchantability or fitness for a particular purpose. The user is responsible for determining whether the tesa® product is fit for a particular purpose and suitable for the user's method of application. If you are in any doubt, our technical support staff will be glad to support you.

## Individual service

Our offer to window and door manufacturers consists of quality products, adhesion promoters, and application tools. What makes us stand out is individual project support backed up by application engineers and research and development resources. The result: high quality and efficient production processes.

## Bonding tapes\*\*

| Product family                 | Product                        | Thick-ness [µm] | Backing         | Adhesive           | Color           | Adhesion [N/cm] ultimate 72 h |      |       |
|--------------------------------|--------------------------------|-----------------|-----------------|--------------------|-----------------|-------------------------------|------|-------|
|                                |                                |                 |                 |                    |                 | Steel                         | Alu  | Glass |
| tesa® ACX <sup>plus</sup> 707x | tesa®ACX <sup>plus</sup> 7072  | 500             | Acrylic foam    | Pure acrylic       | Black           | 20                            | 18   | 20    |
|                                | tesa®ACX <sup>plus</sup> 7074* | 1.000           |                 |                    |                 | 30                            | 25   | 32    |
|                                | tesa®ACX <sup>plus</sup> 7076* | 1.500           |                 |                    |                 | 35                            | 28   | 36    |
|                                | tesa®ACX <sup>plus</sup> 7078* | 2.000           |                 |                    |                 | 40                            | 32   | 40    |
| tesa® ACX <sup>plus</sup> 706x | tesa®ACX <sup>plus</sup> 7065  | 1.200           | Acrylic foam    | Modified acrylic   | Black           | 40                            | 35   | 36    |
| tesa® 62612 Dry-Glaze          | tesa® 62612*                   | 1.600           | PE foam         | Pure acrylic       | Black           | 19                            | 19   | 19    |
| tesa® 625xx PE-foam            | tesa® 62505                    | 500             | PE foam         | Modified acrylic   | Black/white     | 9,5                           | 9,5  | –     |
|                                | tesa® 62510                    | 1.000           | PE foam         | Modified acrylic   | Black/white     | 13,5                          | 13,5 | –     |
|                                | tesa® 62512*                   | 1.200           | PE foam         | Modified acrylic   | Black/white     | 13,5                          | 13,5 | –     |
|                                | tesa® 62938                    | 2.000           | PE foam         | Modified acrylic   | Black/white     | 6                             | 6    | –     |
|                                | tesa® 62939*                   | 3.000           | PE foam         | Modified acrylic   | Black/white     | 6                             | 6    | –     |
| Thin double-sided tape         | tesa® 66013                    | 130             | PET scrim       | Waterbased acrylic | Translucent     | 16,5                          | –    | –     |
| Single-sided solutions         | tesa® 4848                     | 48              | PE - film       | Acrylic            | Translucent/red | 0,8                           | –    | –     |
|                                | tesa® 50530                    | 80              | Polyolefin film | EVA                | White           | 1                             | –    | –     |

\*ift proof of performance available for products   \*\*more thicknesses available

## Adhesion promoters

| Product     | Adhesion promoters for tesa® ACX <sup>plus</sup> bonding tape  |
|-------------|--|
| tesa® 60150 | Universal Adhesion Promoter: enhances bonding strength to various substrates.                                  |
| tesa® 60151 | Adhesion Promoter for Glass: specifically enhances permanent bonding strength to glass.                        |
| tesa® 60153 | Fast Cure Adhesion Promoter: increases immediate adhesion and enhances bonding strength to various substrates. |
| tesa® 50690 | Set of pen with tips for adhesion promoter application.  |



## Application tools

| Product         | Application and dispensing tools   |
|-----------------|--|
| tesa® 6085      | Easy Taper: standard manual dispenser for tape application from the roll.                                  |
| tesa® 6081      | Spool Dispenser: unit with brake/buffer system for integration to e.g. extrusion lines.                    |
| tesa® 6040 PV21 | Lamination Tool, for lamination of tesaR ACX <sup>plus</sup> on frame                                      |
| tesa® 6096      | Motorized spool dispensing unit specifically for tesa® ACX <sup>plus</sup> with interliner rewinding unit. |



Membership to associations:





11/2025

## Certifications

Our company is focused on international quality, environmental, and occupational safety standards.

Please find more information regarding our certifications at:  
[www.tesa.com/certifications](http://www.tesa.com/certifications)

tesa SE  
Phone: +49 40 88899 0  
[tesa.com/company/locations](http://tesa.com/company/locations)

**tesa.com**