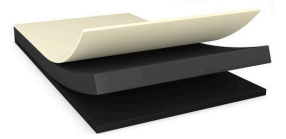


tesa® 7160

Product Information



60µm single sided solid black filmic tape

Product Description

tesa® 7160 is a solid black, single sided self-adhesive tape consisting of a black PET film backing and a black tackified acrylic adhesive

Product Features

- Thickness: 60µm
- Excellent light blocking performance
- Very high peel strength and shear resistance
- Very good repulsion resistance properties
- Very good handling performance in converting processes
- Excellent resistance to demanding environmental conditions
- Pin whole free product design
- Very high electrical resistance

Application Fields

- Fixing of cables or constructive parts in LED light sources or Flat Panel displays
- Light shielding in consumer electronics parts

Technical Information (average values)

The values in this section should be considered representative or typical only and should not be used for specification purposes.

Product Construction

- | | | | |
|--------------------|----------|----------------------|-------|
| • Backing | PET film | • Total thickness | 60 µm |
| • Type of adhesive | acrylic | • Thickness of liner | 70 µm |
| • Type of liner | glassine | | |

Properties/Performance Values

- | | | | |
|--------------------------------|-----------|-------------------------------------|-----------|
| • Elongation at break | 80 % | • Static shear resistance at 40°C | very good |
| • Tensile strength | 30 N/cm | • Tack | good |
| • Ageing resistance (UV) | very good | • Temperature resistance long term | 100 °C |
| • Dielectric breakdown voltage | 5000 V | • Temperature resistance short term | 200 °C |
| • Humidity resistance | good | • Transmittance (380 - 780nm) < | 0.005 % |
| • Softener resistance | good | | |

tesa[®] 7160

Product Information

Adhesion to Values

• ABS (initial)	5.7 N/cm	• Glass (after 14 days)	7 N/cm
• ABS (after 14 days)	6.4 N/cm	• PC (initial)	5.9 N/cm
• Aluminium (initial)	5.2 N/cm	• PC (after 14 days)	7 N/cm
• Aluminium (after 14 days)	6.6 N/cm	• Steel (initial)	5.9 N/cm
• Glass (initial)	6 N/cm	• Steel (after 14 days)	7.3 N/cm

Disclaimer

tesa[®] products prove their impressive quality day in, day out in demanding conditions and are regularly subjected to strict controls. All information and recommendations are provided to the best of our knowledge on the basis of our practical experience. Nevertheless tesa SE can make no warranties, express or implied, including, but not limited to any implied warranty of merchantability or fitness for a particular purpose. Therefore, the user is responsible for determining whether the tesa[®] product is fit for a particular purpose and suitable for the user's method of application. If you are in any doubt, our technical support staff will be glad to support you.



For latest information on this product please visit <http://l.tesa.com/?ip=7160>