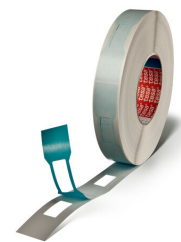




tesa® 54287

Product Information



Repulpable Butterfly Shaped Die Cut

Product Description

tesa® 54287 is a single sided repulpable butterfly shaped die cut with two predetermined breaking points of 3,16 mm width. It consists of a flat-back paper and a modified water soluble acrylic adhesive.

tesa® 54287 features especially:

- Very good adhesion values on coated and uncoated paper
- Very high shear strength
- Very high heat resistance
- Low thickness
- Good repulpability over full pH-range (pH3 - pH9)

Colour: Blue

Application Fields

tesa® 54287 is suitable to fix the top layer of a paper roll with V/W shaped splice pattern during the flying splice process in the paper producing, printing and converting industry.

It provides a secure fixation of the web during acceleration of the reels and reliable breaking on contact.

Technical Information (average values)

The values in this section should be considered representative or typical only and should not be used for specification purposes.

Product Construction

- Total thickness 80 µm

Properties/Performance Values

- Die cut length 100 mm
- Die cut width 25 mm

Disclaimer

tesa® products prove their impressive quality day in, day out in demanding conditions and are regularly subjected to strict controls. All information and recommendations are provided to the best of our knowledge on the basis of our practical experience. Nevertheless tesa SE can make no warranties, express or implied, including, but not limited to any implied warranty of merchantability or fitness for a particular purpose. Therefore, the user is responsible for determining whether the tesa® product is fit for a particular purpose and suitable for the user's method of application. If you are in any doubt, our technical support staff will be glad to support you.