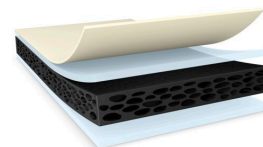




# tesa® 66187

## Product Information



350µm d/s conformable PE foam tape with superior shear resistance

### Product Description

tesa® 66187 is a black double-sided tape consisting of a soft PE foam backing and shear resistance adhesive on both sides.

### Product Features

- Excellent gap closing performance on uneven and rough surface
- Superior shear resistance
- Strong bonding performance under harsh environments
- Outstanding push-out resistance
- Excellent waterproof performance

### Application Fields

- Back cover mounting on smart phone and feature phone, especially mounting on uneven surface or curved design.
- Screen & touch panel mounting in electronics devices like smart phone, tablet, laptop.
- Display bottom mounting on smart phone of curved OLED.
- Mounting with waterproof purpose

### Technical Information (average values)

The values in this section should be considered representative or typical only and should not be used for specification purposes.

### Product Construction

- |                    |                   |                      |        |
|--------------------|-------------------|----------------------|--------|
| • Backing          | PE foam           | • Total thickness    | 350 µm |
| • Type of adhesive | tackified acrylic | • Color              | black  |
| • Type of liner    | PET film          | • Thickness of liner | 50 µm  |

### Properties/Performance Values

- |                                   |           |                                   |           |
|-----------------------------------|-----------|-----------------------------------|-----------|
| • Static shear resistance at 23°C | very good | • Static shear resistance at 40°C | very good |
|-----------------------------------|-----------|-----------------------------------|-----------|

### Adhesion to Values

- |                         |           |                        |           |
|-------------------------|-----------|------------------------|-----------|
| • Glass (initial)       | 11.5 N/cm | • PC (after 14 days)   | 13.5 N/cm |
| • Glass (after 14 days) | 15 N/cm   | • Steel (initial)      | 11 N/cm   |
| • PC (initial)          | 13.5 N/cm | • Steel (after 3 days) | 11.5 N/cm |



# tesa<sup>®</sup> 66187

## Product Information

### Disclaimer

tesa<sup>®</sup> products prove their impressive quality day in, day out in demanding conditions and are regularly subjected to strict controls. All information and recommendations are provided to the best of our knowledge on the basis of our practical experience. Nevertheless tesa SE can make no warranties, express or implied, including, but not limited to any implied warranty of merchantability or fitness for a particular purpose. Therefore, the user is responsible for determining whether the tesa<sup>®</sup> product is fit for a particular purpose and suitable for the user's method of application. If you are in any doubt, our technical support staff will be glad to support you.



For latest information on this product please visit <http://l.tesa.com/?ip=66187>