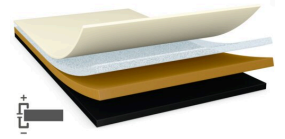




# tesa® 60334

## Product Information



tesa® 60334 40 µm single sided matte black single sided electrically conductive copper tape

## Product Description

tesa® 60334 is matte black single sided electrically conductive copper tape. It consists of electrically conductive matte black copper backing and single sided conductive adhesive coating layer. Designed for EMI shielding for display, FPC, MLB and other components applications.

## Product Features

- Excellent matte black appearance
- Excellent electrical conductivity in XYZ-direction
- Excellent EMI shielding performance
- Good bonding strength
- Good heat spreading performance with copper backing

## Application Fields

- Display covering and shielding
- MLB shielding
- FPC shielding
- Matte black shielding and covering on component

### Technical Information (average values)

The values in this section should be considered representative or typical only and should not be used for specification purposes.

### Technical Information (average values)

The values in this section should be considered representative or typical only and should not be used for specification purposes.

## Product Construction

- |                    |                    |                      |             |
|--------------------|--------------------|----------------------|-------------|
| • Type of adhesive | conductive acrylic | • Color              | matte black |
| • Type of liner    | PET film           | • Color of liner     | transparent |
| • Total thickness  | 40 µm              | • Thickness of liner | 100 µm      |

## Properties/Performance Values

- |  |                        |   |                  |
|--|------------------------|---|------------------|
| • Contact resistance z-direction (initial) | 0.05 Ohm / square inch | • Surface resistance x-y-direction (adhesive) | 0.1 Ohm / square |
| • Gloss level (60°)                        | 1.1 GU                 | • Surface resistance x-y-direction (backing)  | 0.1 Ohm / square |

For latest information on this product please visit <http://l.tesa.com/?ip=60334>



# tesa<sup>®</sup> 60334

## Product Information

### Adhesion to Values

- Steel (initial) 6 N/cm

### Disclaimer

tesa<sup>®</sup> products prove their impressive quality day in, day out in demanding conditions and are regularly subjected to strict controls. All information and recommendations are provided to the best of our knowledge on the basis of our practical experience. Nevertheless tesa SE can make no warranties, express or implied, including, but not limited to any implied warranty of merchantability or fitness for a particular purpose. Therefore, the user is responsible for determining whether the tesa<sup>®</sup> product is fit for a particular purpose and suitable for the user's method of application. If you are in any doubt, our technical support staff will be glad to support you.



For latest information on this product please visit <http://l.tesa.com/?ip=60334>