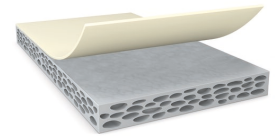




tesa[®] 6700 New Bond

Product Information

400µm double-sided acrylic foam tape



Product Description

tesa[®] 6700 is double-sided acrylic foam tape in grey color, the AC foam works both as backing and adhesive

Product Features

- Sufficient bonding on different substrates
- Good shear resistant
- Temperature resistant

Application Fields

Example mounting applications include but are not limited to:

- Control panel in elevator
- Touch panel in home appliance

Technical Information (average values)

The values in this section should be considered representative or typical only and should not be used for specification purposes.

Product Construction

- | | | | |
|--------------------|-----------------|-------------------|--------|
| • Backing | foamed acrylic | • Total thickness | 400 µm |
| • Type of adhesive | pure acrylic | • Color | gray |
| • Type of liner | PE-coated paper | | |

Properties/Performance Values

- | | | | |
|-----------------------|----------|------------------------------------|--------|
| • Elongation at break | 890 % | • Static shear resistance at 70°C | good |
| • Tensile strength | 2.6 N/cm | • Temperature resistance long term | 100 °C |

Adhesion to Values

- | | | | |
|-----------------------------|---------|-------------------------|---------|
| • ABS (initial) | 8 N/cm | • PC (initial) | 12 N/cm |
| • ABS (after 3 days) | 12 N/cm | • PC (after 3 days) | 15 N/cm |
| • Aluminium (initial) | 14 N/cm | • PMMA (initial) | 12 N/cm |
| • Aluminium (after 14 days) | 18 N/cm | • PMMA (after 3 days) | 15 N/cm |
| • Aluminium (after 3 days) | 25 N/cm | • Steel (initial) | 14 N/cm |
| • Glass (initial) | 14 N/cm | • Steel (after 14 days) | 21 N/cm |
| • Glass (after 3 days) | 18 N/cm | • Steel (after 3 days) | 21 N/cm |

For latest information on this product please visit <http://l.tesa.com/?ip=06700>



tesa[®] 6700 New Bond

Product Information

Additional Information

Liner variants:

PV01 White paper with blue logo, d/s release coating (150µm)

Disclaimer

tesa[®] products prove their impressive quality day in, day out in demanding conditions and are regularly subjected to strict controls. All information and recommendations are provided to the best of our knowledge on the basis of our practical experience. Nevertheless tesa SE can make no warranties, express or implied, including, but not limited to any implied warranty of merchantability or fitness for a particular purpose. Therefore, the user is responsible for determining whether the tesa[®] product is fit for a particular purpose and suitable for the user's method of application. If you are in any doubt, our technical support staff will be glad to support you.



For latest information on this product please visit <http://l.tesa.com/?ip=06700>