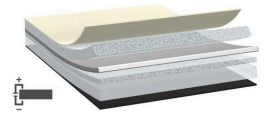




# tesa<sup>®</sup> 60827

## Product Information



64 µm single sided black electrically conductive aluminum tape

### Product Description

tesa<sup>®</sup> 60827 is a single sided black electrically conductive aluminum tape. It consists of electrically conductive Al/PET backing and single sided conductive adhesive coating layer. A black PET is laminated on aluminum foil for electrical insulation in z-direction. Designed for EMI shielding and grounding for electronic devices and components.

<span style="color: var(--attrpanel-color-text, #1a2028); background-color: var(--palette-white, #ffffff)

### Product Features

- Excellent electrical conductivity in X-Y direction
- Suitable for automatic application with tear resistant PET backing
- Reliable aging performance
- Good bonding strength
- Excellent black appearance

### Application Fields

- EMI shielding and grounding for electronics devices and components

### Technical Information (average values)

The values in this section should be considered representative or typical only and should not be used for specification purposes.

### Product Construction

- |                    |                    |                      |        |
|--------------------|--------------------|----------------------|--------|
| • Backing          | aluminium foil     | • Color              | black  |
| • Type of adhesive | conductive acrylic | • Color of liner     | white  |
| • Type of liner    | PE-coated paper    | • Thickness of liner | 130 µm |
| • Total thickness  | 64 µm              |                      |        |

### Product Assortment

- |                    |       |                         |       |
|--------------------|-------|-------------------------|-------|
| • Available colors | black | • Available thicknesses | 64 µm |
|--------------------|-------|-------------------------|-------|

### Properties/Performance Values

- |                    |         |   |                  |
|--------------------|---------|---|------------------|
| • Tensile strength | 48 N/cm | • Surface resistance x-y-direction (adhesive) | 0.3 Ohm / square |
|--------------------|---------|---|------------------|

### Adhesion to Values

- |                   |          |                         |        |
|-------------------|----------|-------------------------|--------|
| • Steel (initial) | 5.5 N/cm | • Steel (after 14 days) | 9 N/cm |
|-------------------|----------|-------------------------|--------|

For latest information on this product please visit <http://l.tesa.com/?ip=60827>



# tesa<sup>®</sup> 60827

## Product Information

### Disclaimer

tesa<sup>®</sup> products prove their impressive quality day in, day out in demanding conditions and are regularly subjected to strict controls. All information and recommendations are provided to the best of our knowledge on the basis of our practical experience. Nevertheless tesa SE can make no warranties, express or implied, including, but not limited to any implied warranty of merchantability or fitness for a particular purpose. Therefore, the user is responsible for determining whether the tesa<sup>®</sup> product is fit for a particular purpose and suitable for the user's method of application. If you are in any doubt, our technical support staff will be glad to support you.



For latest information on this product please visit <http://l.tesa.com/?ip=60827>