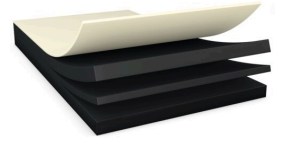




# tesa<sup>®</sup> 7652

## Product Information



70µm double sided solid black film tape

## Product Description

tesa<sup>®</sup> 7652 is a double-sided self-adhesive tape consisting of a black PET film backing and a black tackified acrylic adhesive.

<span style="color: var(--attrpanel-color-text, #1a2028); font-size: var(--font-size-sm, 12px) ; background-color: var(--palette-white, #ffffff)

## Product Features

- Very good light blocking properties
- Very good bonding strength and shear resistance
- Excellent resistance to demanding environmental conditions
- Easy handling performance in converting processes

## Application Fields

- Mounting of LCD panel and backlight unit
- Light shielding and light blocking of key components

## Technical Information (average values)

The values in this section should be considered representative or typical only and should not be used for specification purposes.

## Product Construction

- |                    |                   |                      |                      |
|--------------------|-------------------|----------------------|----------------------|
| • Backing          | PET film          | • Color              | black                |
| • Type of adhesive | tackified acrylic | • Color of liner     | white with tesa logo |
| • Type of liner    | glassine          | • Thickness of liner | 71 µm                |
| • Total thickness  | 70 µm             | • Weight of liner    | 80 g/m <sup>2</sup>  |

## Properties/Performance Values

- |                          |           |                       |      |
|--------------------------|-----------|-----------------------|------|
| • Elongation at break    | 50 %      | • Humidity resistance | good |
| • Tensile strength       | 20 N/cm   | • Tack                | low  |
| • Ageing resistance (UV) | very good |                       |      |

For latest information on this product please visit <http://l.tesa.com/?ip=07652>



# tesa<sup>®</sup> 7652

## Product Information

### Adhesion to Values

|                         |          |                         |          |
|-------------------------|----------|-------------------------|----------|
| • Glass (initial)       | 5.1 N/cm | • PC (after 14 days)    | 5.6 N/cm |
| • Glass (after 14 days) | 5.5 N/cm | • Steel (initial)       | 6.5 N/cm |
| • PC (initial)          | 4.8 N/cm | • Steel (after 14 days) | 7.5 N/cm |

### Disclaimer

tesa<sup>®</sup> products prove their impressive quality day in, day out in demanding conditions and are regularly subjected to strict controls. All information and recommendations are provided to the best of our knowledge on the basis of our practical experience. Nevertheless tesa SE can make no warranties, express or implied, including, but not limited to any implied warranty of merchantability or fitness for a particular purpose. Therefore, the user is responsible for determining whether the tesa<sup>®</sup> product is fit for a particular purpose and suitable for the user's method of application. If you are in any doubt, our technical support staff will be glad to support you.



For latest information on this product please visit <http://l.tesa.com/?ip=07652>