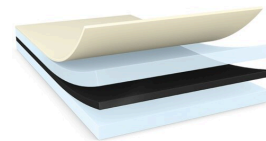




tesa® 68814

Product Information



100µm double sided LSE and tacky Mounting tape

Product Description

tesa® 68814 is a black, double sided self-adhesive tape, consisting of a black PET backing. The modified acrylic adhesive ensures a very high tack and high bonding strength on polar and non-polar substrates.

Product Features

- Thickness: 100µm
- Excellent bonding strength, even on LSE and rough substrates
- Excellent tack and fast activation
- Very good shock resistance
- High push-out resistance
- Black color for easy detection or design purposes

Application Fields

- Component mounting
- Speaker mesh mounting
- Battery mounting
- Lens mounting

Technical Information (average values)

The values in this section should be considered representative or typical only and should not be used for specification purposes.

Product Construction

• Backing	PET film	• Color	black
• Type of adhesive	modified acrylic	• Color of liner	transparent
• Type of liner	PET film	• Thickness of liner	50 µm
• Total thickness	100 µm		

Properties/Performance Values

• Elongation at break	50 %	• Tack	very good
• Tensile strength	20 N/cm	• Temperature resistance long term	100 °C
• Ageing resistance (UV)	very good	• Temperature resistance short term	200 °C
• Humidity resistance	good		



tesa[®] 68814

Product Information

Adhesion to Values

• PC (initial)	12 N/cm	• PP (initial)	11 N/cm
• PC (after 14 days)	13 N/cm	• PP (after 14 days)	11.5 N/cm
• PE (initial)	7 N/cm	• Steel (initial)	13.5 N/cm
• PE (after 14 days)	8 N/cm	• Steel (after 14 days)	14 N/cm

Additional Information

liner variants: PV30 (double PET liner), PV40 (white glassine paper liner with red tesa logo)

Disclaimer

tesa[®] products prove their impressive quality day in, day out in demanding conditions and are regularly subjected to strict controls. All information and recommendations are provided to the best of our knowledge on the basis of our practical experience. Nevertheless tesa SE can make no warranties, express or implied, including, but not limited to any implied warranty of merchantability or fitness for a particular purpose. Therefore, the user is responsible for determining whether the tesa[®] product is fit for a particular purpose and suitable for the user's method of application. If you are in any doubt, our technical support staff will be glad to support you.

For latest information on this product please visit <http://l.tesa.com/?ip=68814>