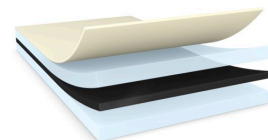




tesa® 61365

Product Information



100µm double-sided black mounting tape with superior push-out and bonding performance

Product Description

tesa® 61365 is a double-sided black self-adhesive tape with a PET backing and tackified acrylic adhesive. Ideal for cover lens and touch panel mounting, it provides superior bonding and push-out performance. Its special acrylic adhesive and versatility make it perfect for various surfaces.

Product Features

- Superior push-out resistance keeps your materials securely in place, even under pressure
- Excellent bonding strength ensures a secure and long-lasting hold
- Good shock resistance provides good durability and withstands shocks and vibrations
- Resistant to challenging environmental conditions

Application Fields

- Ideal for cover lens mounting in mobile phones, providing a secure and reliable attachment
- Perfect for touch panel mounting, offering high bonding strength and good shock resistance

Technical Information (average values)

The values in this section should be considered representative or typical only and should not be used for specification purposes.

Product Construction

• Backing	PET film	• Color	black
• Type of adhesive	tackified acrylic	• Color of liner	white with tesa logo
• Type of liner	glassine	• Thickness of liner	69 µm
• Total thickness	100 µm	• Weight of liner	80 g/m ²

Properties/Performance Values

• Elongation at break	50 %	• Static shear resistance at 40°C	good
• Tensile strength	20 N/cm	• Temperature resistance long term	100 °C
• Ageing resistance (UV)	very good	• Temperature resistance short term	200 °C
• Humidity resistance	very good		



tesa® 61365

Product Information

Adhesion to Values

• ABS (initial)	7.8 N/cm	• PC (covered side, after 14 days)	18.3 N/cm
• ABS (after 14 days)	11.3 N/cm	• PC (covered side, initial)	10.2 N/cm
• ABS (covered side, after 14 days)	11.2 N/cm	• PMMA (initial)	12.6 N/cm
• ABS (covered side, initial)	9.4 N/cm	• PMMA (after 14 days)	16.7 N/cm
• Glass (initial)	12.5 N/cm	• Steel (initial)	13.7 N/cm
• Glass (after 14 days)	14.5 N/cm	• Steel (after 14 days)	16.5 N/cm
• PC (initial)	9 N/cm	• Steel (covered side, after 14 days)	17.6 N/cm
• PC (after 14 days)	17.7 N/cm	• Steel (covered side, initial)	14.2 N/cm

Disclaimer

tesa® products prove their impressive quality day in, day out in demanding conditions and are regularly subjected to strict controls. All information and recommendations are provided to the best of our knowledge on the basis of our practical experience. Nevertheless tesa SE can make no warranties, express or implied, including, but not limited to any implied warranty of merchantability or fitness for a particular purpose. Therefore, the user is responsible for determining whether the tesa® product is fit for a particular purpose and suitable for the user's method of application. If you are in any doubt, our technical support staff will be glad to support you.

For latest information on this product please visit <http://l.tesa.com/?ip=61365>