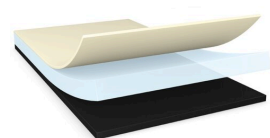




# tesa® 67310

## Product Information



10µm single-sided matte black polyimide tape

## Product Description

tesa® 67310 is a matte black single-sided tape, consisting of an ultra-thin polyimide film backing and special anti-repulsion acrylic adhesive.

tesa® 67310 features:

- Thickness: 10µm
- Ultra matte black surface with a gloss level of 2.5 %
- Outstanding scratch and fingerprint resistance
- Excellent anti-repulsion properties
- Very good chemical and temperature stability
- Very good insulation resistance properties

## Product Features

- Thickness: 10µm
- Ultra matte black surface with a gloss level of 2.5 %
- Outstanding scratch and fingerprint resistance
- Excellent anti-repulsion properties
- Very good chemical and temperature stability
- Very good insulation resistance properties

## Application Fields

- Ferrite and graphite sheet protection
- NFC antenna covering
- Fixing or wrapping applications where insulation resistance, flame retardant or high temperature is required
- Li-battery edge wrapping

## Technical Information (average values)

The values in this section should be considered representative or typical only and should not be used for specification purposes.

## Product Construction

- |                    |           |                      |       |
|--------------------|-----------|----------------------|-------|
| • Backing          | Polyimide | • Total thickness    | 10 µm |
| • Type of adhesive | acrylic   | • Thickness of liner | 50 µm |
| • Type of liner    | PET       |                      |       |

## Properties/Performance Values

- |                       |      |                                |        |
|-----------------------|------|--------------------------------|--------|
| • Elongation at break | 30 % | • Dielectric breakdown voltage | 1500 V |
|-----------------------|------|--------------------------------|--------|

For latest information on this product please visit <http://l.tesa.com/?ip=67310>



# tesa® 67310

## Product Information

### Adhesion to Values

- Steel 1.2 N/cm

### Disclaimer

tesa® products prove their impressive quality day in, day out in demanding conditions and are regularly subjected to strict controls. All information and recommendations are provided to the best of our knowledge on the basis of our practical experience. Nevertheless tesa SE can make no warranties, express or implied, including, but not limited to any implied warranty of merchantability or fitness for a particular purpose. Therefore, the user is responsible for determining whether the tesa® product is fit for a particular purpose and suitable for the user's method of application. If you are in any doubt, our technical support staff will be glad to support you.

For latest information on this product please visit <http://l.tesa.com/?ip=67310>