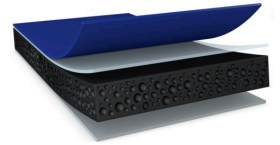




74712 Seal Line



Product Information

1.2 mm heat activatable acrylic foam tape for mounting of demanding seal applications such as door seals

Product Description

tesa® ACX^{plus} 74712 Seal Line is a deep black acrylic foam tape for permanent mounting of seals, mainly on automotive clearcoat. It has a heat-activatable adhesive on the non-liner side. The adhesive gets activated by hot air or near-infrared when applying it onto the PP/EPDM, PP, TPV, or TPE seal.

Compared to the conventional process with primer, tesa® ACX^{plus} 74712 Seal Line ensures a highly secure bond to the rubber profile, enables a higher application speed than using primer, and improves the operational safety during the production process.

By introducing a functional layer at the liner side, tesa® ACX^{plus} 74712 can be used on various automotive clearcoats even without the use of adhesion promoters. The acrylic foam core ensures outstanding dimensional stability even at high temperatures and loads. At the same time, by its viscoelastic properties, tesa® ACX^{plus} 74712 Seal Line absorbs and dissipates dynamic and static loads. This also allows compensation of extreme physical stress caused by the different thermal elongation of bonded parts in rapidly changing temperatures.

The deep black color provides an enhanced appearance and high design flexibility.

Product Features

- Efficient and secure bonding of the heat-activatable layer to seals
- Application on clearcoats without primer
- Final peel adhesion reached after 24 h
- Enhanced temperature resistance
- Robust shear performance even at high temperatures
- PFAS / PFOS free product
- Strong bonding of the heat-activatable layer to acrylic core that withstands even humidity and heat
- Closed cell acrylic foam core for reliable sealing to prevent water penetration
- High humidity and UV resistance
- Excellent cold shock performance

Application Fields

tesa® ACX^{plus} 74712 Seal Line can be widely used for all kinds of automotive seal applications within a temperature range of -40 °C to 90 °C.



74712

Seal Line

Product Information

Technical Information (average values)

The values in this section should be considered representative or typical only and should not be used for specification purposes.

Product Construction

| | | | |
|--------------------|-----------------------|----------------------------|------------------|
| • Backing | foamed acrylic | • Color | deep black |
| • Type of adhesive | acrylic | • Color of liner | blue |
| • Type of liner | PE/PP protection film | • Type of adhesive to seal | heat-activatable |
| • Total thickness | 1.2 mm | | |

Product Assortment

| | |
|--------------------|------------|
| • Available colors | deep black |
|--------------------|------------|

Properties/Performance Values

| | | | |
|-----------------------|---------|--------------------------|-----------|
| • Elongation at break | 500 % | • Ageing resistance (UV) | very good |
| • Tensile strength | 19 N/cm | • Humidity resistance | very good |

Adhesion to Values

| | | | |
|---|---------|---|---------|
| • Clear coat (after 20 min) | 18 N/cm | • Steel (after 3 days) | 36 N/cm |
| • Clear coat (covered side, after 3 days) | 36 N/cm | • TPE (T-Peel, after 3 days warm / humid) | 16 N/cm |
| • Steel (initial) | 36 N/cm | • TPE (T-Peel, after 3 days) | 16 N/cm |

Additional Information

- PV29 = filmic liner in royal blue, siliconized to adhesive side and silicone free to tabbing side, works with both heat and adhesive tabbing tapes. Liner removal force ≤ 100 cN/cm.
- Adhesion to steel and tesa standard clearcoat: measured at 90°, 300mm/min, tape reinforced with aluminium foil
- T-Peel test: heat-activatable adhesive to standard TPE seal, 300 mm/min
- Warm/humid storage: 72 h at 40°C and 100% r.h.



74712

Seal Line

Product Information

Disclaimer

tesa® products prove their impressive quality day in, day out in demanding conditions and are regularly subjected to strict controls. All information and recommendations are provided to the best of our knowledge on the basis of our practical experience. Nevertheless tesa SE can make no warranties, express or implied, including, but not limited to any implied warranty of merchantability or fitness for a particular purpose. Therefore, the user is responsible for determining whether the tesa® product is fit for a particular purpose and suitable for the user's method of application. If you are in any doubt, our technical support staff will be glad to support you.



For latest information on this product please visit <http://l.tesa.com/?ip=74712>