

Building Construction · tesa SBS Furniture



A EAN Clips · 8x | **B** Hook · 8x | **C** Product Separator · 8x | **D** + **E** NIVEA Bottles · each 1x | **F** Holder for NIVEA Bottles · 1x | **G** Hangtag · 1x | **H** Plinth Panel · 2x | **I** Socket Sticker · 1x

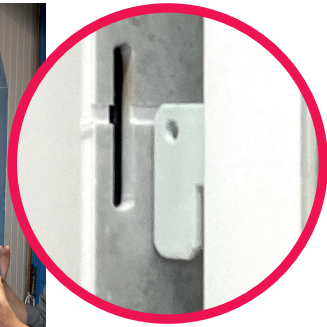


1 Remove the shipping protection from under the hood and carefully lift it out of the display. To do this, first loosen the screw at the top. **Attention, risk of breakage!**



2 Put the holder (**F**) over the NIVEA bottles (**D** **E**) and clip them to the basket as shown. Clip on the hangtag (**G**) as well.

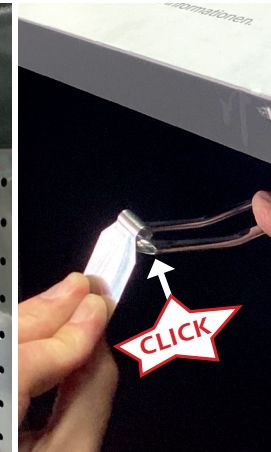
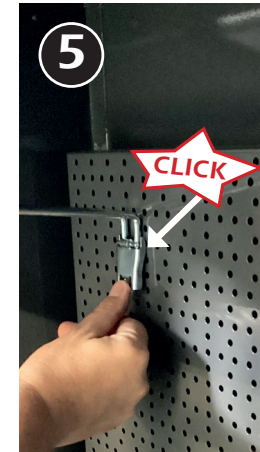
Building Construction · tesa SBS Furniture



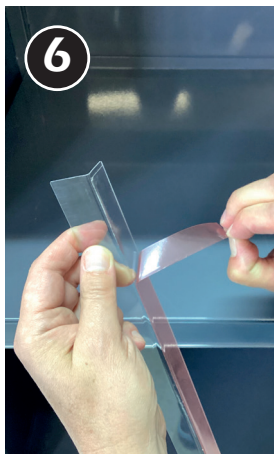
Carefully hang in the fitted hood and screw it back on top. Please make sure that the hood engages correctly in the back wall and is flush with the floor of the „shower“.



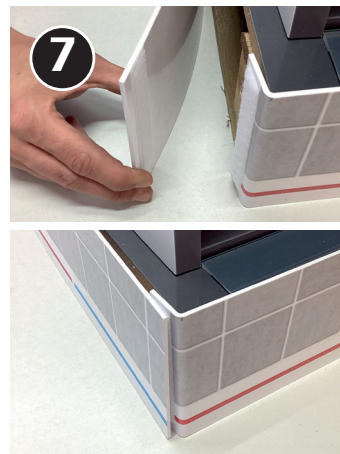
Hang the shelf at the desired height. You can find them on the display floor.



Clip the hooks (B) to the back panel and the EAN clips (A) to the hooks.



Remove the protective film from the product dividers (C) and stick them to the shelves. Use the desired products as spacers and make sure to glue the product separators straight.



Cover the pallet with the two plinth panels (H) by velcroing them together.



Optionally place the additional sticker (I) left-aligned with the blue stripe on the plinth front.



Also mount the three tesa Bath Accessories products, as well as the two shower baskets, on the already pre-assembled adapters.