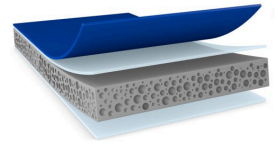




tesa® 77811 Primerless Line



Product Information

1.1 mm double-sided acrylic foam tape for mounting of automotive exterior attachment parts

Product Description

tesa® ACX^{plus} 77811 is a double-sided acrylic foam tape for mounting of automotive exterior attachment parts. It is a triple-layer symmetrically designed product, coated on both sides with LSE adhesive. It can help eliminate the primer in the process. Its high-performance LSE adhesive creates an efficient and secure bond to typical automotive attachment parts made of LSE (like PP and PP/EPDM) and MSE (like ABS) plastics without primer.

In addition, our product also has excellent adhesive properties when it comes to different types of OEM clear coats. Thanks to its viscoelastic acrylic foam core, tesa® ACX^{plus} 77811 Primerless Line has the ability to absorb and dissipate dynamic and static loads.

Also available in 0.5mm, 0.8 mm and 1.5 mm formats

Main Features

- High initial performance on LSE plastics and difficult-to-bond clear coats without primer
- Superior peel-adhesion level right after application
- Excellent bonding stability at an application temperature as low as 5°C
- PFAS / PFOS free Product
- Efficient and robust application
- Viscoelastic acrylic foam core to compensate for different thermal elongation of bonded parts
- Outstanding wet-out property
- High humidity and UV resistance

LSE: low surface energy, MSE: medium surface energy

Application Fields

tesa® ACX^{plus} 77811 Primerless Line is suitable for a wide range of permanent exterior mounting applications. To ensure the highest performance possible, our aim is to fully understand your application (including the substrates involved) in order to provide the right product recommendation.

Example applications are:

- Body side moldings and decorative trims
- Emblems
- Spoilers
- Antennas
- Pillar appliqués
- PDC mounting



tesa® 77811

Primerless Line

Product Information

Technical Information (average values)

The values in this section should be considered representative or typical only and should not be used for specification purposes.

Product Construction

• Backing material	Acrylic foam	• Total thickness	1100 µm
• Type of adhesive	LSE	• Colour	gray
• Type of liner	PE	• Colour of liner	blue

Properties/Performance Values

• Ageing resistance (UV)	good	• Static shear resistance at 90°C	good
• Humidity resistance	very good	• T-block	very good
• L-jig	good	• Temperature range	-40 to +80 °C

Adhesion to Values

• ABS (after 3 days)	31 N/cm	• PP (initial, 1 min)	33 N/cm
• ABS (initial, 1 min)	29 N/cm	• Steel (after 3 days)	35 N/cm
• PP (after 3 days)	38 N/cm	• Steel (initial, 1 min)	32 N/cm

Additional Information

- Static shear resistance tested with 25 mm x 25 mm tape on steel, 200 g weight
- PV 15 = royal blue siliconized HDPE film liner
- Temperature range: values are load dependent

Disclaimer

tesa® products prove their impressive quality day in, day out in demanding conditions and are regularly subjected to strict controls. All information and recommendations are provided to the best of our knowledge on the basis of our practical experience. Nevertheless tesa SE can make no warranties, express or implied, including, but not limited to any implied warranty of merchantability or fitness for a particular purpose. Therefore, the user is responsible for determining whether the tesa® product is fit for a particular purpose and suitable for the user's method of application. If you are in any doubt, our technical support staff will be glad to support you.