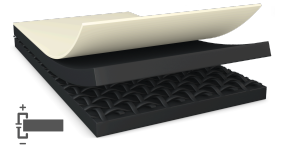




tesa[®] 60233

Product Information



60µm/2.4 mils single sided matte black electrically conductive tape xy-axis

Product Description

tesa[®] 60233 is a matte black single sided electrically conductive self adhesive tape. It consists of a matte black PET backing which is laminated with an Aluminium foil and a conductive non-woven. The backing is coated on the non-woven side with an electrically conductive adhesive.

tesa[®] 60233 features especially:

- Thickness: 60µm/2.4 mils
- Excellent electrical conductivity in XY-direction for very good grounding performance
- PET film on the surface provides insulation function
- High adhesion level even at harsh environmental conditions avoids edge lifting
- Minimized curling for easy processing and lamination
- Matte black surface (low gloss) with anti-finger print and solvent resistant characteristic

Application Fields

- Grounding of LCD to metal BLU chassis

Technical Information (average values)

The values in this section should be considered representative or typical only and should not be used for specification purposes.

Product Construction

- | | | | |
|--------------------|---|----------------------|-----------------|
| • Backing material | Black PET / alu foil / conductive non-woven | • Color | matte black |
| • Type of adhesive | conductive acrylic | • Color of liner | white/blue logo |
| • Type of liner | PE-coated paper | • Thickness of liner | 50 µm
2 mils |

Properties/Performance Values

- | | | | |
|-----------------------------------|------|-------------------------------------|------------------|
| • Release of liner | easy | • Surface resistance x-y-direction | 0.2 mOhm |
| • Static shear resistance at 23°C | good | • Temperature resistance short term | 200 °C
392 °F |
| • Static shear resistance at 40°C | good | | |

Adhesion to Values

- | | |
|-------------------------|----------------------|
| • Steel (after 14 days) | 5 N/cm
45.7 oz/in |
|-------------------------|----------------------|

For latest information on this product please visit <http://l.tesa.com/?ip=60233>



tesa[®] 60233

Product Information

Disclaimer

tesa[®] products prove their impressive quality day in, day out in demanding conditions and are regularly subjected to strict controls. All information and recommendations are provided to the best of our knowledge on the basis of our practical experience. Nevertheless tesa SE can make no warranties, express or implied, including, but not limited to any implied warranty of merchantability or fitness for a particular purpose. Therefore, the user is responsible for determining whether the tesa[®] product is fit for a particular purpose and suitable for the user's method of application. If you are in any doubt, our technical support staff will be glad to support you.

For latest information on this product please visit <http://l.tesa.com/?ip=60233>