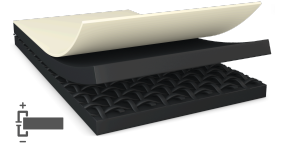




# tesa® 60238

## Product Information



45µm/1.8 mils single sided matte black electrically conductive tape

## Product Description

tesa® 60238 is a matte black single sided xyz conductive EMI shielding tape. It consists of matte black electrically conductive copper backing which is coated with electrically conductive acrylic adhesive. Designed for EMI shielding and ESD grounding for display and other components applications.

tesa® 60238 features especially:

- Excellent EMI shielding performance
- Excellent electrical conductivity in XYZ-direction for very good grounding performance
- High adhesion level even at harsh environmental conditions avoids edge lifting
- Outstanding heat spreading performance
- Matte black surface (low gloss) with anti-finger print and solvent resistant characteristic

## Application Fields

- Edge wrapping for display
- Matte black covering over components for shielding and ESD grounding
- Light management on display
- Heat management on various components

## Technical Information (average values)

The values in this section should be considered representative or typical only and should not be used for specification purposes.

## Product Construction

• Backing material	black-coated copper	• Color	matte black
• Type of adhesive	conductive acrylic	• Color of liner	transparent, translucent
• Type of liner	PET	• Thickness of liner	50 µm 2 mils
• Total thickness	45 µm 1.8 mils		

## Properties/Performance Values

• Contact resistance z-direction (initial)	0.05 Ohm / square inch	• Surface resistance x-y-direction (backing)	0.4 Ohm / square
• Static shear resistance at 40°C	good	• Temperature resistance short term	200 °C 392 °F
• Surface resistance x-y-direction (adhesive)	0.2 Ohm / square		

For latest information on this product please visit <http://l.tesa.com/?ip=60238>



# tesa® 60238

## Product Information

### Adhesion to Values

- Steel (after 14 days)                      7 N/cm  
64 oz/in

### Disclaimer

tesa® products prove their impressive quality day in, day out in demanding conditions and are regularly subjected to strict controls. All information and recommendations are provided to the best of our knowledge on the basis of our practical experience. Nevertheless tesa SE can make no warranties, express or implied, including, but not limited to any implied warranty of merchantability or fitness for a particular purpose. Therefore, the user is responsible for determining whether the tesa® product is fit for a particular purpose and suitable for the user's method of application. If you are in any doubt, our technical support staff will be glad to support you.



For latest information on this product please visit <http://l.tesa.com/?ip=60238>