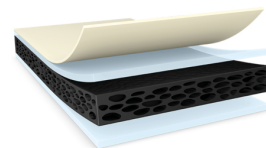




tesa® 64905

Product Information



Product Description

tesa® 64905 is a double-sided adhesive tape consisting of a conformable black PE foam backing and a LSE adhesive. With a thickness of 0.5 mm, it is suitable for mounting small parts, like emblems.

The LSE adhesive features a high initial adhesion to LSE clear coats and LSE plastics such as PP and PP/EPDM, and MSE plastics like ABS and PC without utilizing primer. It reaches a high level of peel adhesion level right after application. Additionally, it even provides near to peak performance at an application temperature as low as 5°C. The impressive cold shock performance results from the damping properties of the PE foam backing even at temperatures below -40°C.

Due to its high conformability, the tape ensures a good wet out and secure bonding including on uneven surfaces and compensates for design tolerances. The PE foam backing also provides non-sticky edges resulting in excellent converting properties, e.g. for die cutting. Additionally, the tape combines high cohesive strength with a comparatively low density contributing positively to a low weight design.

Main features:

- High initial adhesion to LSE and MSE surfaces without primer
- Near to peak peel adhesion level right after application
- Good performance at an application temperature as low as 5°C
- Conformable foam backing to compensate design tolerances or uneven surfaces
- Reliable performance at higher temperatures
- Excellent converting properties

LSE: low surface energy

MSE: medium surface energy

Application Fields

tesa® 64905 is suitable for mounting a wide range of small exterior and interior trims and parts.

Example applications are:

- Small decorative exterior and interior trims
- Emblems
- Lettering such as single letters for classification of car models or engine data

To ensure the highest performance possible, our aim is to fully understand your application (including the substrates involved) in order to provide the right product recommendation.



tesa® 64905

Product Information

Technical Information (average values)

The values in this section should be considered representative or typical only and should not be used for specification purposes.

Product Construction

• Color of liner	brown	• Backing material	PE foam
• Total thickness	0.5 mm	• Type of adhesive	LSE
	0 inch	• Type of liner	glassine
• Thickness of liner	69 µm		
	2.7 mils		
• Color	black		

Properties/Performance Values

• Elongation at break	270 %	• Tensile strength	8 N/cm 4.6 lbs/in
-----------------------	-------	--------------------	----------------------

Adhesion to Values

• Steel (initial)	22 N/cm 201 oz/in	• PP (initial)	15 N/cm 137 oz/in
• PP (after 14 days)	22 N/cm 201 oz/in	• Steel (after 14 days)	22 N/cm 201 oz/in

Additional Information

Liner variants:

PVO brown glassine (69 µm)

Peel Adhesion:

- after 14 days: foam splitting on Steel and PP



tesa® 64905

Product Information

Disclaimer

tesa® products prove their impressive quality day in, day out in demanding conditions and are regularly subjected to strict controls. All information and recommendations are provided to the best of our knowledge on the basis of our practical experience. Nevertheless tesa SE can make no warranties, express or implied, including, but not limited to any implied warranty of merchantability or fitness for a particular purpose. Therefore, the user is responsible for determining whether the tesa® product is fit for a particular purpose and suitable for the user's method of application. If you are in any doubt, our technical support staff will be glad to support you.



For latest information on this product please visit
<http://l.tesa.com/?ip=64905>