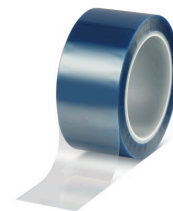




# tesa® 50625

## Product Information



### PET Masking Tape 200°C with Silicone Adhesive

#### Product Description

tesa® 50625 is a blue-translucent basic powder coating tape which is highly conformable featuring a polyester backing with a silicone adhesive. tesa® 50625 is used for various applications, especially for masking during powder-coating processes, surface protection applications and bonding of non-polar materials.

#### Product Features

- Residue-free removability for masking and surface protection applications
- Good conformability, thin backing for sharp color edges
- The masking tape's silicone adhesive system makes the tape heat-resistant, withstanding temperatures of up to 200°C for as long as 30 minutes at a time

#### Application Fields

- tesa® 50625 is ideally suited for masking off areas that are to be protected during powder-coating processes
- The high-temperature tape can withstand temperatures of up to 200°C for 30 minutes
- tesa® 50625 can be used for surface protection applications
- The masking tape features residue-free removal

#### Technical Information (average values)

The values in this section should be considered representative or typical only and should not be used for specification purposes.

#### Product Construction

- |                    |          |                   |        |
|--------------------|----------|-------------------|--------|
| • Backing          | PET      | • Total thickness | 50 µm  |
| • Type of adhesive | silicone |                   | 2 mils |

#### Properties/Performance Values

- |                                |             |                                   |        |
|--------------------------------|-------------|-----------------------------------|--------|
| • Elongation at break          | 130 %       | • Hand tearability                | no     |
| • Tensile strength             | 50 N/cm     | • Paint anchorage                 | good   |
|                                | 28.6 lbs/in | • Sharp color edge                | yes    |
| • Conformability               | yes         | • Temperature resistance (30 min) | 200 °C |
| • Dielectric breakdown voltage | 4000 V      |                                   | 392 °F |
| • Easy to remove               | yes         |                                   |        |

#### Adhesion to Values

- |         |            |
|---------|------------|
| • Steel | 3.2 N/cm   |
|         | 29.2 oz/in |



# tesa® 50625

## Product Information

### Disclaimer

tesa® products prove their impressive quality day in, day out in demanding conditions and are regularly subjected to strict controls. All information and recommendations are provided to the best of our knowledge on the basis of our practical experience. Nevertheless tesa SE can make no warranties, express or implied, including, but not limited to any implied warranty of merchantability or fitness for a particular purpose. Therefore, the user is responsible for determining whether the tesa® product is fit for a particular purpose and suitable for the user's method of application. If you are in any doubt, our technical support staff will be glad to support you.



For latest information on this product please visit <http://l.tesa.com/?ip=50625>