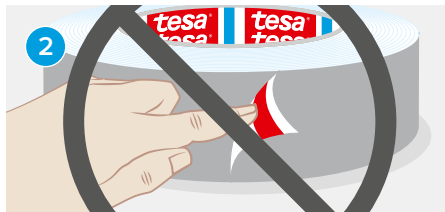


Application guide

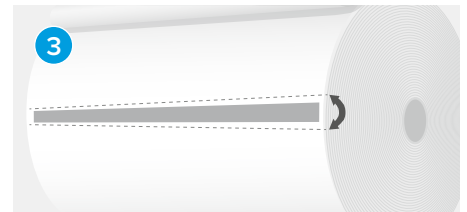
tesa® EasySplice for paper producers and converters



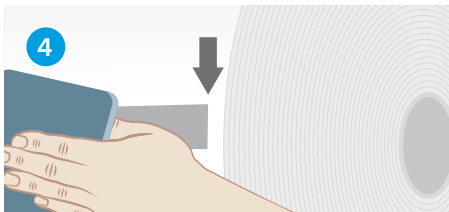
Fold back the top layer.



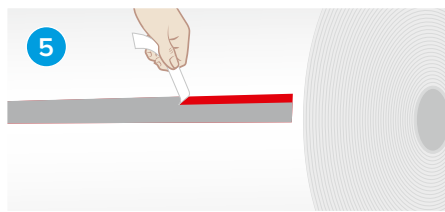
Do not touch the exposed adhesive on the reverse side of the tape.



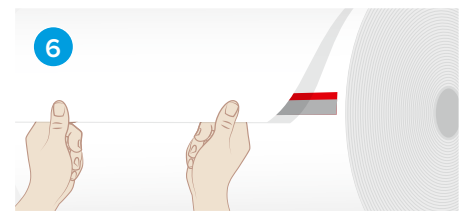
Apply the tape in a straight line or at a slight angle (narrow part of liner on top).



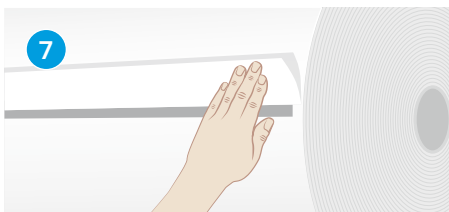
Leave a space of 10 mm (~0.5") on either side of the reel.



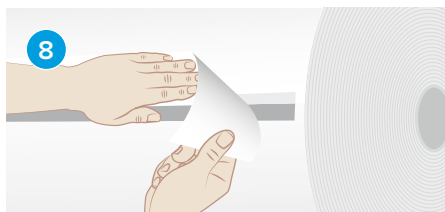
Remove the narrow part of the liner, pulling upwards.



Pull the top sheet tightly over the exposed adhesive.



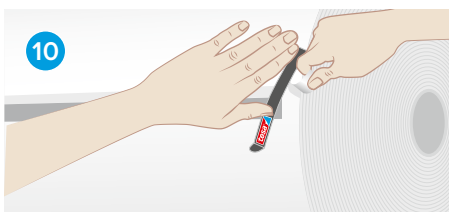
Fold back the excess material.



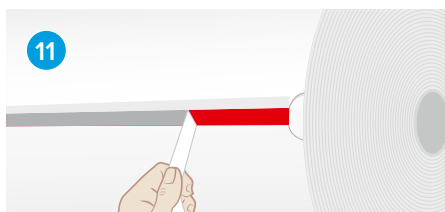
Tear away the excess material.



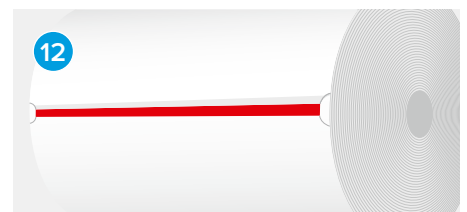
Apply pressure on the tape to ensure excellent adhesion of the splitting strip.



Trim both edges and remove all material which may flutter during acceleration.



Remove the remaining liner, pulling downwards.



Reel is ready to splice.