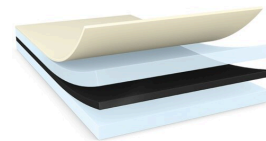




# tesa® 61385

## Product Information



150µm black d/s filmic high performance tape

### Product Description

tesa® 61385 is a black, double sided self-adhesive tape consisting of a black PET backing and a tackified acrylic adhesive.

Special features:

- Thickness: 150µm
- Very high bonding strength
- Superior push out resistance
- High shock resistance
- Excellent resistance to demanding environmental conditions
- Black color for easy detection or design purposes

### Product Features

- Thickness: 150µm
- Very high bonding strength
- Superior push out resistance
- High shock resistance
- Excellent resistance to demanding environmental conditions
- Black color for easy detection or design purposes

### Application Fields

- Lens mounting in mobile phones
- Touch panel mounting

### Technical Information (average values)

The values in this section should be considered representative or typical only and should not be used for specification purposes.

### Product Construction

• Backing	PET film	• Color	black
• Type of adhesive	tackified acrylic	• Color of liner	white with tesa logo
• Type of liner	glassine	• Thickness of liner	71 µm
• Total thickness	150 µm		2.8 mils
	5.9 mils	• Weight of liner	80 g/m <sup>2</sup>



# tesa® 61385

## Product Information

### Properties/Performance Values

• Elongation at break	50 %	• Static shear resistance at 40°C	good
• Tensile strength	20 N/cm	• Tack	medium
	11.4 lbs/in	• Temperature resistance long term	100 °C
• Ageing resistance (UV)	very good		212 °F
• Humidity resistance	very good	• Temperature resistance short term	200 °C
			392 °F

### Adhesion to Values

• ABS (initial)	9.3 N/cm	• PC (after 14 days)	19.1 N/cm
	85 oz/in		174.5 oz/in
• ABS (after 14 days)	13.1 N/cm	• PMMA (initial)	13.7 N/cm
	119.7 oz/in		125.2 oz/in
• Glass (initial)	14.4 N/cm	• PMMA (after 14 days)	19.2 N/cm
	131.6 oz/in		175.4 oz/in
• Glass (after 14 days)	16.4 N/cm	• Steel (initial)	14.1 N/cm
	149.8 oz/in		128.8 oz/in
• PC (initial)	11.4 N/cm	• Steel (after 14 days)	16.9 N/cm
	104.2 oz/in		154.4 oz/in

### Disclaimer

tesa® products prove their impressive quality day in, day out in demanding conditions and are regularly subjected to strict controls. All information and recommendations are provided to the best of our knowledge on the basis of our practical experience. Nevertheless tesa SE can make no warranties, express or implied, including, but not limited to any implied warranty of merchantability or fitness for a particular purpose. Therefore, the user is responsible for determining whether the tesa® product is fit for a particular purpose and suitable for the user's method of application. If you are in any doubt, our technical support staff will be glad to support you.



For latest information on this product please visit <http://l.tesa.com/?ip=61385>