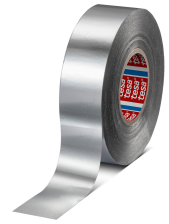




tesa[®] 60614

Product Information



Aluminum laminated PET tape

Product Features

- The aluminum layer ensures thermal conductivity to increase heat transfer
- The PET layer enhances the dispensing performance of the tapes
- Excellent conformability enables a tight bond of the cooling tubes to the refrigerator housing
- The tape has a very good initial adhesion to relevant plastics and metals

Application Fields

- Developed especially for the white goods industry
- The tape is used in the automated production of refrigerators and freezers
- It bonds the metallic cooling tubes to the plastic bodies

Technical Information (average values)

The values in this section should be considered representative or typical only and should not be used for specification purposes.

Product Construction

- | | | | |
|--------------------|-------------------------|-------------------|-------|
| • Backing material | Al-PET barrier laminate | • Type of liner | none |
| • Type of adhesive | acrylic | • Total thickness | 45 µm |

Properties/Performance Values

- | | | | |
|-----------------------|---------|-------------------------------|--------|
| • Elongation at break | 30 % | • Operation temperature from | -20 °C |
| • Tensile strength | 30 N/cm | • Operation temperature up to | 120 °C |
| • Easy to remove | no | | |

Adhesion to Values

- | | | | |
|-----------|--------|---------|--------|
| • Backing | 2 N/cm | • steel | 6 N/cm |
|-----------|--------|---------|--------|



tesa[®] 60614

Product Information

Disclaimer

tesa[®] products prove their impressive quality day in, day out in demanding conditions and are regularly subjected to strict controls. All information and recommendations are provided to the best of our knowledge on the basis of our practical experience. Nevertheless tesa SE can make no warranties, express or implied, including, but not limited to any implied warranty of merchantability or fitness for a particular purpose. Therefore, the user is responsible for determining whether the tesa[®] product is fit for a particular purpose and suitable for the user's method of application. If you are in any doubt, our technical support staff will be glad to support you.



For latest information on this product please visit <http://l.tesa.com/?ip=60614>