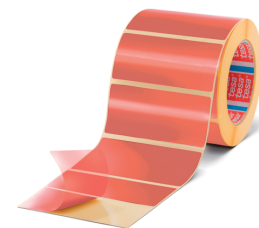




tesa® 54965

Product Information



205µm double sided transparent film tape

Product Description

tesa® 4965 Die-Cut is based on a patented and protected product formulation. Several products are equipped with this unique and high performing product design and together these products make up Team 4965. This double-sided film tape assortment helps to easily select the most efficient tape based on customer demands, products, and processes. Order tesa® 4965 Die-Cut using order number tesa® 54965. Explore the benefits of the full tesa® 4965 assortment here: <https://www.tesa.com/en-sg/industry/general-applications/mounting/team-4965-assortment>

tesa® 4965 Die-Cut features:

- Easy and robust die-cutting opportunities
- Specific shape designs for demanding applications
- Reliable bond even on hard to stick surfaces
- Immediate usability right after assembly

Application Fields

- Emblem mounting
- Display mounting on appliances

Product Construction

- | | | | |
|-------------------|-------------|--------------------|-------------------|
| • Total thickness | 205 | • Backing material | PET film |
| • Color | transparent | • Type of adhesive | tackified acrylic |

Properties/Performance Values

- | | | | |
|------------------------------------|--------|-------------------------------------|--------|
| • Elongation at break | 50 | • Temperature resistance short term | 200 °C |
| • Static shear resistance at 23°C | + | • Tack | + |
| • Resistance to chemicals | + | • Tensile strength | 20 |
| • Humidity resistance | ++ | • Ageing resistance (UV) | ++ |
| • Static shear resistance at 40°C | + | • Softener resistance | + |
| • Temperature resistance long term | 100 °C | | |



tesa® 54965

Product Information

Adhesion to Values

• Steel (initial)	11.5	• Aluminium (initial)	9.2
• PE (initial)	5.8	• ABS (after 14 days)	12
• PC (after 14 days)	14	• PC (initial)	12.6
• PS (after 14 days)	12	• PVC (initial)	8.7
• ABS (initial)	10.3	• PS (initial)	10.6
• PP (after 14 days)	7.9	• PET (initial)	9.2
• PET (after 14 days)	9.5	• PP (initial)	6.8
• Aluminium (after 14 days)	10.6	• Steel (after 14 days)	11.8
• PE (after 14 days)	6.9	• PVC (after 14 days)	13

Disclaimer

tesa® products prove their impressive quality day in, day out in demanding conditions and are regularly subjected to strict controls. All information and recommendations are provided to the best of our knowledge on the basis of our practical experience. Nevertheless tesa SE can make no warranties, express or implied, including, but not limited to any implied warranty of merchantability or fitness for a particular purpose. Therefore, the user is responsible for determining whether the tesa® product is fit for a particular purpose and suitable for the user's method of application. If you are in any doubt, our technical support staff will be glad to support you.



For latest information on this product please visit
<http://l.tesa.com/?ip=54965>