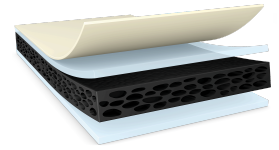




tesa[®] 66829

Product Information



Black double-sided tape

Product Description

tesa[®] 66829 is a black double-sided tape consisting of a shock absorbing PE-foam backing equipped with a novel shock & anti-repulsion adhesive.

tesa[®] 66829 features:

- Outstanding shock performance
- Waterproofness
- Outstanding anti-repulsion properties
- Good rework ability and easily clean up residue
- Superior push-out strength

Application Fields

- Smart Phone & Feature Phone: Screen, back cover & touch panel mounting
- Tablet & Touch laptop: Screen, back cover & touch panel mounting
- Smart watch: Screen & touch panel mounting
- Smart TV: Screen & frame mounting
- Battery mounting

Technical Information (average values)

The values in this section should be considered representative or typical only and should not be used for specification purposes.

Product Construction

- | | | | |
|--------------------|-------------------|-------------------|--------|
| • Backing material | PE foam | • Total thickness | 350 µm |
| • Type of adhesive | tackified acrylic | • Color | black |

Properties/Performance Values

- | | | | |
|--------------------------|---------|-------------------------------------|-------|
| • Elongation at break | 280 % | • Static shear resistance at 23°C | good |
| • Tensile strength | 14 N/cm | • Static shear resistance at 40°C | good |
| • Ageing resistance (UV) | good | • Temperature resistance long term | 70 °C |
| • Humidity resistance | good | • Temperature resistance short term | 90 °C |



tesa[®] 66829

Product Information

Adhesion to Values

• ABS (initial)	10.6 N/cm	• PE (initial)	8.3 N/cm
• ABS (after 14 days)	12.8 N/cm	• PE (after 14 days)	9.5 N/cm
• Glass (initial)	13.2 N/cm	• PMMA (initial)	13 N/cm
• Glass (after 14 days)	14 N/cm	• PMMA (after 14 days)	16.5 N/cm
• PC (initial)	12.5 N/cm	• Steel (initial)	12.6 N/cm
• PC (after 14 days)	16 N/cm	• Steel (after 14 days)	14.6 N/cm

Additional Information

Liner: PV07 transparent PET-film (50µm; 72g/m²)

Disclaimer

tesa[®] products prove their impressive quality day in, day out in demanding conditions and are regularly subjected to strict controls. All information and recommendations are provided to the best of our knowledge on the basis of our practical experience. Nevertheless tesa SE can make no warranties, express or implied, including, but not limited to any implied warranty of merchantability or fitness for a particular purpose. Therefore, the user is responsible for determining whether the tesa[®] product is fit for a particular purpose and suitable for the user's method of application. If you are in any doubt, our technical support staff will be glad to support you.



For latest information on this product please visit <http://l.tesa.com/?ip=66829>