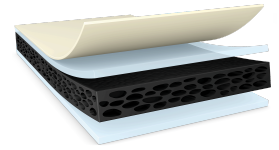




# tesa<sup>®</sup> 66218

## Product Information



## Black double-sided tape

### Product Description

tesa<sup>®</sup> 66218 is a black double-sided tape consisting of a shock absorbing PE-foam backing equipped with a novel shock & anti-repulsion adhesive.

tesa<sup>®</sup> 66218 features:

- Outstanding shock performance
- Outstanding anti-repulsion properties to prevent lifting issue
- Superior push-out resistance
- Waterproofness
- Good rework ability

### Product Features

- Outstanding shock performance
- Outstanding anti-repulsion properties to prevent lifting issue
- Superior push-out resistance
- Waterproofness
- Good rework ability

### Application Fields

- Smart Phone & Feature Phone: screen mounting
- \* Tablet & Touch laptop: screen mounting
- \* Smart TV: Lens mounting & frame mounting

### Technical Information (average values)

The values in this section should be considered representative or typical only and should not be used for specification purposes.

### Product Construction

- |                    |                   |                      |        |
|--------------------|-------------------|----------------------|--------|
| • Backing material | PE foam           | • Total thickness    | 400 µm |
| • Type of adhesive | tackified acrylic | • Color              | black  |
| • Type of liner    | PET film          | • Thickness of liner | 50 µm  |



# tesa<sup>®</sup> 66218

## Product Information

### Properties/Performance Values

• Elongation at break	325 %	• Static shear resistance at 23°C	very good
• Tensile strength	15.3 N/cm	• Static shear resistance at 40°C	good
• Ageing resistance (UV)	good	• Temperature resistance long term	70 °C
• Humidity resistance	good	• Temperature resistance short term	90 °C

### Adhesion to Values

• ABS (initial)	11.6 N/cm	• PC (after 14 days)	16 N/cm
• ABS (after 14 days)	12.8 N/cm	• PE (initial)	8.3 N/cm
• Aluminium (initial)	11.4 N/cm	• PE (after 14 days)	9.5 N/cm
• Aluminium (after 14 days)	12.8 N/cm	• PMMA (initial)	13 N/cm
• Glass (initial)	13.3 N/cm	• PMMA (after 14 days)	16.5 N/cm
• Glass (after 14 days)	14 N/cm	• Steel (initial)	12.6 N/cm
• PC (initial)	12.5 N/cm	• Steel (after 14 days)	14.8 N/cm

### Additional Information

Liner: PV07 transparent PET-film (50µm; 72g/m<sup>2</sup>)

### Disclaimer

tesa<sup>®</sup> products prove their impressive quality day in, day out in demanding conditions and are regularly subjected to strict controls. All information and recommendations are provided to the best of our knowledge on the basis of our practical experience. Nevertheless tesa SE can make no warranties, express or implied, including, but not limited to any implied warranty of merchantability or fitness for a particular purpose. Therefore, the user is responsible for determining whether the tesa<sup>®</sup> product is fit for a particular purpose and suitable for the user's method of application. If you are in any doubt, our technical support staff will be glad to support you.



For latest information on this product please visit <http://l.tesa.com/?ip=66218>