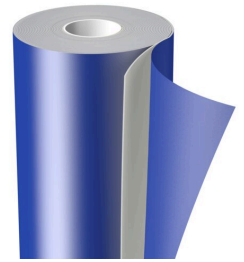




tesa[®] 88026

Product Information



2.6mm tesaprint[®] Cushioning Foam

Product Description

tesa[®] 88026 is a grey closed-cell PE foam, equipped with an acrylic adhesive, covered by a blue film liner.

It is especially designed to add a compressible layer to the compound of printing plate and carrier film when printing directly on corrugated board (Flexo post-print).

The outstanding foam quality will ensure excellent print quality, especially in combination with thinner printing plates. It also provides long-term resilience and outstanding resistance against water and solvents.

To use our tesaprint[®] Cushioning Foams, simply cut off the required foam size and remove the film liner to adhere the foam to the backside of your carrier film, after you have finished the printing plate mounting.

Application Fields

Compressible substructure for post-print printing plates.

Technical Information (average values)

The values in this section should be considered representative or typical only and should not be used for specification purposes.

Product Construction

- Backing material PE foam
- Type of adhesive acrylic

Properties/Performance Values

- Product design removable HDPE liner

Disclaimer

tesa[®] products prove their impressive quality day in, day out in demanding conditions and are regularly subjected to strict controls. All information and recommendations are provided to the best of our knowledge on the basis of our practical experience. Nevertheless tesa SE can make no warranties, express or implied, including, but not limited to any implied warranty of merchantability or fitness for a particular purpose. Therefore, the user is responsible for determining whether the tesa[®] product is fit for a particular purpose and suitable for the user's method of application. If you are in any doubt, our technical support staff will be glad to support you.

For latest information on this product please visit <http://l.tesa.com/?ip=88026>