



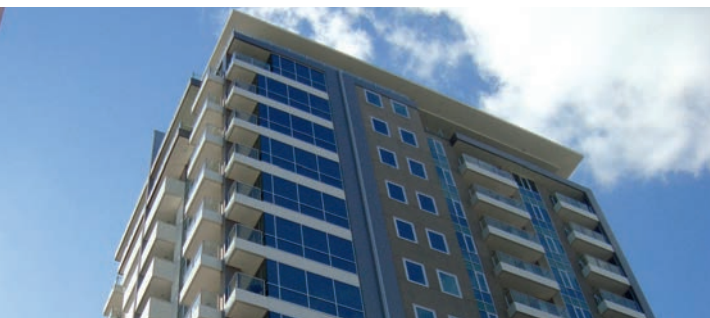
# TRUSTED FAÇADE SOLUTIONS

No Limits to Your Architectural Dreams

# NO LIMITS TO ARCHITECTURAL CONCEPTIONS



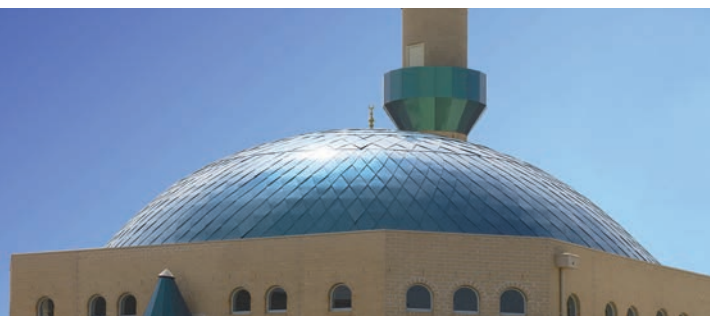
Kube Building Darwin, Australia  
tesa® ACX<sup>plus</sup> 70200



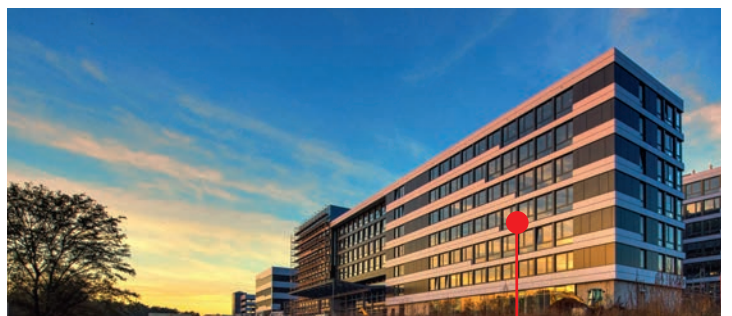
Rolands Apartment Adelaide, Australia  
tesa® ACX<sup>plus</sup> 70200



Netball Centre Perth, Australia  
tesa® ACX<sup>plus</sup> 70200



Mosque, Australia  
tesa® ACX<sup>plus</sup> 70200

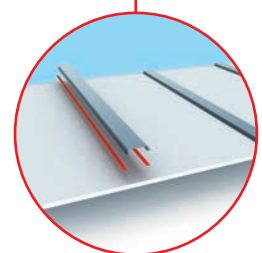


one tesa Hamburg, Germany  
tesa® ACX<sup>plus</sup> 7074

## Stiffener mounting in cassette systems

Secure and durable bond of non-load-bearing stiffeners in prefabricated cassette systems

- Resistant to harsh outdoor conditions
- Compensation of different thermal elongation of the material in use
- Aging stability







Clinica Alemana de Santiago, Chile  
tesa® ACX<sup>plus</sup> 70200



Industrial Complex Churrola,  
Australia  
tesa® ACX<sup>plus</sup> 70200



Gerard Lighting Fullarton, Australia  
tesa® ACX<sup>plus</sup> 70200



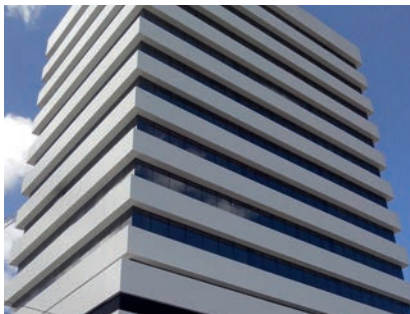
Hyundai Melbourne, Australia  
tesa® ACX<sup>plus</sup> 70200



Flinders Parks Family Dental,  
Adelaide, Australia  
tesa® ACX<sup>plus</sup> 70200



BP on the Run Dry Creek, Australia  
tesa® ACX<sup>plus</sup> 70200



Corporate Center Ponta Grossa,  
Brazil  
tesa® ACX<sup>plus</sup> 70200



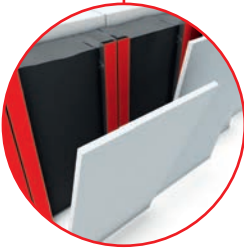
Federal Police Building  
Adelaide, Australia  
tesa® ACX<sup>plus</sup> 70200



Mogas Heuley Petrol Station,  
Adelaide, Australia  
tesa® ACX<sup>plus</sup> 70200

### Direct-stick method

- Concealed mounting of aluminum composite panels to metal substructures
- Invisible and optimal aesthetic design
  - No damage to the material in use
  - Weather-resistant and suitable for outdoor use



# HIGH PERFORMANCE IN DEMANDING ENVIRONMENTS



Schneider Building Montreal, Mexico  
tesa® ACX<sup>plus</sup> 70200



Schneider Building Montreal, Mexico  
tesa® ACX<sup>plus</sup> 70200



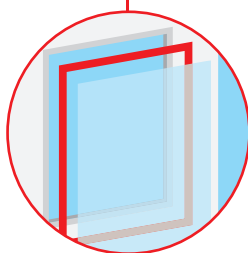
Pontifical Catholic University of Chile  
tesa® ACX<sup>plus</sup> 70200



Genesis Building, Chile  
tesa® ACX<sup>plus</sup> 70200



Hotel Saucos del Estadio, Colombia  
tesa® ACX<sup>plus</sup> 70200



## Mounting of glass curtain walls

Fastening of glass panels on aluminum frames supported by L-Profiles

- Certified and tested by different institutes in Chile, Brazil, and USA
- Secure bond
- Sealing and high holding power





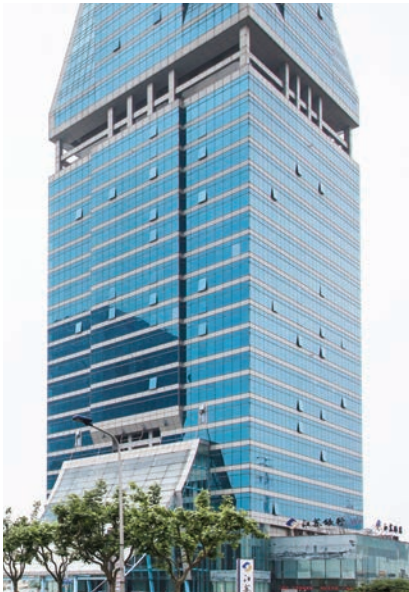
Inter Continental, Thailand  
tesa® 60057



OCBC Center, Singapore  
tesa® 60057



Jin Sui Building, Shanghai  
tesa® 60058



King Tower, Shanghai  
tesa® 60058

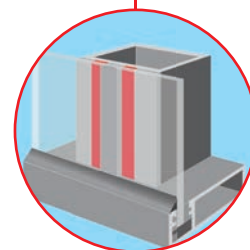


Crown Casino, Australia  
tesa® 60059

### Spacer Tape

Designed as a spacer element for two-sided and four-sided structural silicone glazing

- Chemically compatible with all major silicone systems
- High compression resistance to ensure consistent thickness of silicon bead
- Low thermal conductivity to minimize heat transfer through your facade



# OTHER PROJECT REFERENCES IN ASIA



1. Raffles City ChongQing China
2. QingLong Residence HangZhou China
3. BMW Showroom HangZhou China
4. ZIT Building China
5. Perth International Airport Australia
6. Adelaide International Airport Australia
7. IGLU Sydney Australia
8. Roland's Apartment Adelaide Australia
9. Industrial Complex Churolla Australia
10. Footscray Apartment Melbourne Australia
11. Bus Terminal Wellington Australia
12. DCS Silverwater Australia
13. Blue Chip Group Australia
14. FM Engineering Sydney Australia
15. Cunneen Sydney Australia
16. Biscan Developments Australia
17. X-clusive Group Australia
18. Wizarly Signs Australia
19. Ausnet Assets Australia
20. Baldivis College Australia
21. Toda Warehouse Vietnam
22. Vincom Thanh Hoa Vietnam
23. Charmington La Point Vietnam
24. Ford Car Showroom Vietnam
25. Unit Trust Building India
26. Hyatt Hotel Bangalore India
27. Marriott Hotel Delhi India
28. LCT Busan Korea
29. United Engineer's Building Singapore
30. OCBC Building Singapore
31. President Tower Bangkok Thailand
32. AM Tower Tokyo

# CONFIRMED AND TESTED BY INDEPENDENT INSTITUTES

	ETAG 003, Category IV Resistance to functional damage from hard body impact load – 0.5kg steel ball. Resistance to functional damage from soft body impact load – 50kg bag UN-EN ISO 140-3: Certificate for sound reduction index
	UL 746C
	DIN EN 13501-1:2012
	Static shear test including mathematical extrapolation up to ten years
	Dynamic tensile and shear measurements according to VE-08/1 ift DI-02/1-2: 2009-03
	Dynamic tensile measurement according to ETAG 002
	Static shear and static tensile load Creep measurement according to ETAG002
	LEED (EQ credit 4.1: Low-Emitting Materials: adhesive & sealants)
	Full part wind load test regarding ABNT NBR 10821-3/11
	AAMA 501.6-09 Earthquake Test
	STN EN ISO 6892-1 Road Sign
	ASTM E 284-04, 330-02,331-00 Rain Screen Testing
	AS 4040.2/3, AS 4040.3 Cyclone Testing







Our management system is certified according to the standards ISO 9001, ISO/TS 16949, and ISO 14001.