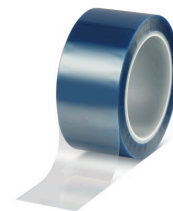




# tesa® 50625

## Product Information



## Technical Information (average values)

The values in this section should be considered representative or typical only and should not be used for specification purposes.

### Product Construction

• Backing	PET	• Total thickness	50 µm
• Type of adhesive	silicone		

### Properties/Performance Values

• Elongation at break	130 %	• Hand tearability	no
• Tensile strength	50 N/cm	• Paint anchorage	good
• Conformability	yes	• Sharp color edge	yes
• Dielectric breakdown voltage	4000 V	• Temperature resistance (30 min)	200 °C
• Easy to remove	yes		

### Adhesion to Values

• Steel	3.2 N/cm
---------	----------

## Disclaimer

tesa® products prove their impressive quality day in, day out in demanding conditions and are regularly subjected to strict controls. All information and recommendations are provided to the best of our knowledge on the basis of our practical experience. Nevertheless tesa SE can make no warranties, express or implied, including, but not limited to any implied warranty of merchantability or fitness for a particular purpose. Therefore, the user is responsible for determining whether the tesa® product is fit for a particular purpose and suitable for the user's method of application. If you are in any doubt, our technical support staff will be glad to support you.



For latest information on this product please visit <http://l.tesa.com/?ip=50625>