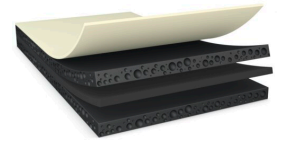




# tesa® 75710

## Product Information



100µm double-sided black reinforced acrylic foam tape

### Product Description

tesa® 75710 is a double-sided black tape with a PET backing. The tape is equipped with a novel foamed shock absorbing and anti-repulsion adhesive.

tesa® 75710 features:

- \* Thickness: 100µm
- \* High shock performance
- \* High thermal shock resistance
- \* High bonding strength
- \* Anti-repulsion properties to prevent lifting
- \* Very good reworkability and die-cut ability
- \* Waterproofing

### Application Fields

- Demanding mounting applications with high requirements for impact resistance
- \* Mounting of waterproof designs
- \* Mounting of components

### Technical Information (average values)

The values in this section should be considered representative or typical only and should not be used for specification purposes.

### Product Construction

• Backing	PETP	• Color	black
• Type of adhesive	modified acrylic	• Color of liner	transparent
• Type of liner	PET	• Thickness of liner	50 µm
• Total thickness	100 µm	• Weight of liner	72 g/m <sup>2</sup>

For latest information on this product please visit <http://l.tesa.com/?ip=75710>



# tesa® 75710

## Product Information

### Product Assortment

- Available thicknesses 100µm, 150µm, 200µm, 250µm, 300µm, 350µm

### Properties/Performance Values

- |                                   |           |                                     |        |
|-----------------------------------|-----------|-------------------------------------|--------|
| • Elongation at break             | 100 %     | • Static shear resistance at 40°C   | good   |
| • Ageing resistance (UV)          | very good | • Temperature resistance long term  | 80 °C  |
| • Static shear resistance at 23°C | good      | • Temperature resistance short term | 130 °C |

### Adhesion to Values

- |                        |          |                        |         |
|------------------------|----------|------------------------|---------|
| • Glass (initial)      | 7.5 N/cm | • PE (initial)         | 5 N/cm  |
| • Glass (after 3 days) | 9.5 N/cm | • PE (after 3 days)    | 6 N/cm  |
| • PC (initial)         | 8 N/cm   | • Steel (initial)      | 10 N/cm |
| • PC (after 3 days)    | 9 N/cm   | • Steel (after 3 days) | 11 N/cm |

### Disclaimer

tesa® products prove their impressive quality day in, day out in demanding conditions and are regularly subjected to strict controls. All information and recommendations are provided to the best of our knowledge on the basis of our practical experience. Nevertheless tesa SE can make no warranties, express or implied, including, but not limited to any implied warranty of merchantability or fitness for a particular purpose. Therefore, the user is responsible for determining whether the tesa® product is fit for a particular purpose and suitable for the user's method of application. If you are in any doubt, our technical support staff will be glad to support you.

For latest information on this product please visit <http://l.tesa.com/?ip=75710>