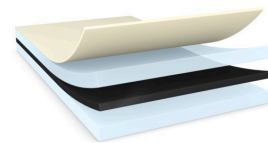




tesa® 61350

Product Information



Double-sided self-adhesive tape

Product Description

tesa® 61350 is a double sided self-adhesive tape consisting of a black PET backing and a tackified acrylic adhesive.

Special features:

- * Thickness: 50µm
- * Very high bonding strength
- * Superior push-out resistance
- * Quick bonding performance
- * Excellent resistance to demanding environmental conditions

Product Features

- Thickness: 50µm
- Very high bonding strength
- Superior push-out resistance
- Quick bonding performance
- Excellent resistance to demanding environmental conditions

Application Fields

- Demanding mounting applications
- Components mounting

Technical Information (average values)

The values in this section should be considered representative or typical only and should not be used for specification purposes.

Product Construction

• Backing	PET film	• Color	black
• Type of adhesive	tackified acrylic	• Color of liner	white with tesa logo
• Type of liner	glassine	• Thickness of liner	71 µm
• Total thickness	50 µm	• Weight of liner	80 g/m ²

For latest information on this product please visit <http://l.tesa.com/?ip=61350>



tesa® 61350

Product Information

Properties/Performance Values

• Elongation at break	70 %	• Static shear resistance at 40°C	good
• Tensile strength	20 N/cm	• Tack	medium
• Ageing resistance (UV)	very good	• Temperature resistance long term	100 °C
• Humidity resistance	very good	• Temperature resistance short term	200 °C

Adhesion to Values

• ABS (initial)	7.8 N/cm	• PMMA (initial)	11.1 N/cm
• ABS (after 14 days)	8.5 N/cm	• PMMA (after 14 days)	12 N/cm
• Glass (initial)	12 N/cm	• Steel (initial)	9.6 N/cm
• Glass (after 14 days)	12.2 N/cm	• Steel (after 14 days)	12.7 N/cm

Disclaimer

tesa® products prove their impressive quality day in, day out in demanding conditions and are regularly subjected to strict controls. All information and recommendations are provided to the best of our knowledge on the basis of our practical experience. Nevertheless tesa SE can make no warranties, express or implied, including, but not limited to any implied warranty of merchantability or fitness for a particular purpose. Therefore, the user is responsible for determining whether the tesa® product is fit for a particular purpose and suitable for the user's method of application. If you are in any doubt, our technical support staff will be glad to support you.



For latest information on this product please visit <http://l.tesa.com/?ip=61350>