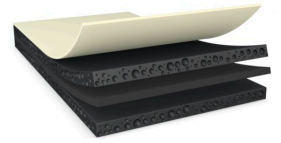




tesa[®] 76115

Product Information



150µm double sided black quick bonding and residue free removable tape

Product Description

tesa[®] 76115 is a double-sided reinforced black mounting tape with a special quick bonding and easy removable adhesive.

Special features:

- * Thickness: 150µm
- * High tack and quick bonding even on LSE substrates
- * Temperature sensitive removing with very fast and residue free removability especially at elevated temperatures
- * Outstanding shock resistance
- * Good anti-repulsion properties to prevent lifting
- * Light blocking
- * Waterproofing (IPX8)
- * Residue free removability

Product Features

- Thickness: 150µm
- High tack and quick bonding even on LSE substrates
- Temperature sensitive removing with very fast and residue free removability especially at elevated temperatures
- Outstanding shock resistance
- Good anti-repulsion properties to prevent lifting
- Light blocking
- Waterproofing (IPX8)
- Residue free removability

Application Fields

- Backcover bonding for mobile devices
- * Display bottom mounting for OLED displays
- * Permanent battery mounting or wrapping
- * Demanding mounting applications for other components in electronic devices

For latest information on this product please visit <http://l.tesa.com/?ip=76115>



tesa[®] 76115

Product Information

Technical Information (average values)

The values in this section should be considered representative or typical only and should not be used for specification purposes.

Product Construction

• Backing	PETP	• Total thickness	150 µm
• Type of adhesive	specialty	• Color	black
• Type of liner	PET	• Color of liner	transparent

Properties/Performance Values

• Static shear resistance at 40°C	very good	• Temperature resistance short term	90 °C
• Temperature resistance long term	60 °C		

Adhesion to Values

• Aluminium (initial)	9 N/cm	• PC (after 14 days)	9 N/cm
• Aluminium (after 14 days)	9 N/cm	• PE (initial)	7 N/cm
• Glass (initial)	10 N/cm	• PE (after 14 days)	7 N/cm
• Glass (after 14 days)	10 N/cm	• Steel (initial)	10 N/cm
• PC (initial)	9 N/cm	• Steel (after 14 days)	10 N/cm

Disclaimer

tesa[®] products prove their impressive quality day in, day out in demanding conditions and are regularly subjected to strict controls. All information and recommendations are provided to the best of our knowledge on the basis of our practical experience. Nevertheless tesa SE can make no warranties, express or implied, including, but not limited to any implied warranty of merchantability or fitness for a particular purpose. Therefore, the user is responsible for determining whether the tesa[®] product is fit for a particular purpose and suitable for the user's method of application. If you are in any doubt, our technical support staff will be glad to support you.



For latest information on this product please visit <http://l.tesa.com/?ip=76115>