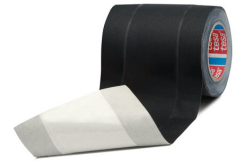




tesa® 4611

Product Information



Tunnel tape

Product Description

tesa® 4611 is a strong acrylic coated cloth tape with a neutralized part of the adhesive side in the middle. It is based on a 120 mesh woven rayon fabric backing and a natural rubber adhesive. tesa® 4611 is an excellent solution for "Arts & Entertainment" applications.

Features:

- high adhesion even on rough surfaces
- excellent tensile strength
- conformable
- easy to remove without residues
- no unpleasant smell
- very matt surface
- can be removed without leaving any residues from almost any surface
- available in black

The advantage of this tape vs. other tape solutions is the possibility to pull cables, cords or wires, even after fixing them on the surface.

Product Features

- High adhesion even on rough surfaces
- Excellent tensile strength
- Conformable
- Easy to remove without residues
- No unpleasant smell
- Very matt surface
- Can be removed without leaving any residues from almost any surface
- The advantage of this tape vs. other tape solutions is the possibility to pull cables, cords or wires, even after fixing them on the surface.

Application Fields

- For cable fixing applications on stages, in the backstage areas in theaters, opera, concert halls, conventions and conferences.



tesa[®] 4611

Product Information

Technical Information (average values)

The values in this section should be considered representative or typical only and should not be used for specification purposes.

Product Construction

- | | | | |
|--------------------|----------------------|---------------------|--------|
| • Backing | Acrylic-coated cloth | • Total thickness | 280 µm |
| • Type of adhesive | natural rubber | • Thickness of tape | 280 µm |

Properties/Performance Values

- | | | | |
|-------------------------------|-----------|---|---------------------------|
| • Elongation at break | 9 % | • Mesh | 120 count per square inch |
| • Tensile strength | 70 N/cm | • Operation temperature up to | 60 °C |
| • Abrasion resistance | very good | • Straight tear edge | very good |
| • Backing appearance (visual) | neutral | • Suitable for rough surfaces | yes |
| • Easy to remove | yes | • Temperature resistance (30 min) | 140 °C |
| • Easy to write on | yes | • Temperature resistance (removability from aluminum after 30 min exposure) | 140 °C |
| • Hand tearability | very good | • Water resistance | good |

Adhesion to Values

- | | |
|---------|----------|
| • Steel | 3.8 N/cm |
|---------|----------|

Additional Information

Recommendation: please conduct a test on the application surface before using the product.

Disclaimer

tesa[®] products prove their impressive quality day in, day out in demanding conditions and are regularly subjected to strict controls. All information and recommendations are provided to the best of our knowledge on the basis of our practical experience. Nevertheless tesa SE can make no warranties, express or implied, including, but not limited to any implied warranty of merchantability or fitness for a particular purpose. Therefore, the user is responsible for determining whether the tesa[®] product is fit for a particular purpose and suitable for the user's method of application. If you are in any doubt, our technical support staff will be glad to support you.



For latest information on this product please visit <http://l.tesa.com/?ip=04611>