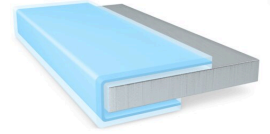




# tesa<sup>®</sup> 68910

## Product Information



100µm double sided transparent anti-repulsion filmic tape

### Product Description

tesa<sup>®</sup> 68910 is a double-sided self-adhesive tape consisting of a transparent PET backing and a special anti-repulsion adhesive.

tesa<sup>®</sup> 68910 features:

- \* Thickness: 100µm
- \* Excellent repulsion resistance properties
- \* High bonding strength and shear resistance
- \* Very good handling performance in converting processes
- \* Excellent resistance to demanding environmental conditions

### Product Features

- Thickness: 100µm
- Excellent repulsion resistance properties
- High bonding strength and shear resistance
- Very good handling performance in converting processes
- Excellent resistance to demanding environmental conditions

### Application Fields

- Bonding on curved surfaces
- \* Mounting of bent substrates
- \* Antenna/FPC mounting

### Technical Information (average values)

The values in this section should be considered representative or typical only and should not be used for specification purposes.

### Product Construction

- |                    |                   |                   |             |
|--------------------|-------------------|-------------------|-------------|
| • Backing          | PET film          | • Total thickness | 100 µm      |
| • Type of adhesive | tackified acrylic | • Color           | transparent |

For latest information on this product please visit <http://l.tesa.com/?ip=68910>



# tesa<sup>®</sup> 68910

## Product Information

### Properties/Performance Values

- |                                    |           |                                     |        |
|------------------------------------|-----------|-------------------------------------|--------|
| • Static shear resistance at 70°C  | very good | • Temperature resistance short term | 140 °C |
| • Temperature resistance long term | 85 °C     |                                     |        |

### Adhesion to Values

- |                   |          |                         |           |
|-------------------|----------|-------------------------|-----------|
| • Steel (initial) | 7.9 N/cm | • Steel (after 14 days) | 12.5 N/cm |
|-------------------|----------|-------------------------|-----------|

### Additional Information

Liner variants:

PV40 white/red logo glassine paper (71µm; 82g/m<sup>2</sup>)

## Disclaimer

tesa<sup>®</sup> products prove their impressive quality day in, day out in demanding conditions and are regularly subjected to strict controls. All information and recommendations are provided to the best of our knowledge on the basis of our practical experience. Nevertheless tesa SE can make no warranties, express or implied, including, but not limited to any implied warranty of merchantability or fitness for a particular purpose. Therefore, the user is responsible for determining whether the tesa<sup>®</sup> product is fit for a particular purpose and suitable for the user's method of application. If you are in any doubt, our technical support staff will be glad to support you.



For latest information on this product please visit <http://l.tesa.com/?ip=68910>