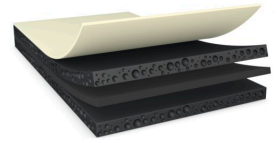




tesa® 76110

Product Information



100µm double sided black quick bonding and residue free removable tape

Product Description

tesa® 76110 is a double-sided reinforced black mounting tape with a special quick bonding and easy removable adhesive.

Special features:

- * Thickness: 100µm
- * High tack and quick bonding even on LSE substrates
- * Temperature sensitive removing with very fast and residue free removability especially at elevated temperatures
- * Outstanding shock resistance
- * Good anti-repulsion properties to prevent lifting
- * Light blocking
- * Waterproofing (IPX8)

Application Fields

- Permanent battery mounting or wrapping
- * Demanding mounting applications for components in electronic devices
- * Other mounting applications on LSE substrates

Technical Information (average values)

The values in this section should be considered representative or typical only and should not be used for specification purposes.

Product Construction

• Backing	PETP	• Color	black
• Type of adhesive	specialty	• Color of liner	transparent
• Type of liner	PET	• Thickness of liner	50 µm
• Total thickness	100 µm		



tesa[®] 76110

Product Information

Properties/Performance Values

- | | | | |
|-----------------------------------|-----------|-------------------------------------|-------|
| • Elongation at break | 100 % | • Temperature resistance long term | 60 °C |
| • Static shear resistance at 40°C | very good | • Temperature resistance short term | 90 °C |

Adhesion to Values

- | | | | |
|-----------------------------|--------|-------------------------|--------|
| • Aluminium (initial) | 8 N/cm | • PC (after 14 days) | 8 N/cm |
| • Aluminium (after 14 days) | 8 N/cm | • PE (initial) | 7 N/cm |
| • Glass (initial) | 9 N/cm | • PE (after 14 days) | 7 N/cm |
| • Glass (after 14 days) | 9 N/cm | • Steel (initial) | 9 N/cm |
| • PC (initial) | 8 N/cm | • Steel (after 14 days) | 9 N/cm |

Disclaimer

tesa[®] products prove their impressive quality day in, day out in demanding conditions and are regularly subjected to strict controls. All information and recommendations are provided to the best of our knowledge on the basis of our practical experience. Nevertheless tesa SE can make no warranties, express or implied, including, but not limited to any implied warranty of merchantability or fitness for a particular purpose. Therefore, the user is responsible for determining whether the tesa[®] product is fit for a particular purpose and suitable for the user's method of application. If you are in any doubt, our technical support staff will be glad to support you.



For latest information on this product please visit <http://l.tesa.com/?ip=76110>