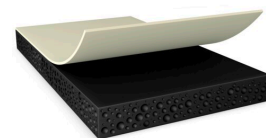




tesa® 75415

Product Information



150µm double sided black flexible acrylic foam tape

Product Description

tesa® 75415 is a double-sided black tape consisting of a high shock absorbing black acrylic foam.

tesa® 75415 features:

- * Thickness: 150µm
- * Very high shock performance
- * Very high thermal shock resistance
- * Very high bonding strength
- * Anti-repulsion properties to prevent lifting
- * Waterproofing
- * Light blocking in x/y direction

Application Fields

- Demanding mounting applications with high requirements for impact resistance
- * Mounting of components
- * Mounting with ultra slim die-cut designs
- * Mounting of waterproof designs

Technical Information (average values)

The values in this section should be considered representative or typical only and should not be used for specification purposes.

Product Construction

• Backing	Acrylic	• Color	black
• Type of adhesive	modified acrylic	• Color of liner	transparent
• Type of liner	PET	• Thickness of liner	50 µm
• Total thickness	150 µm	• Weight of liner	72 g/m ²

For latest information on this product please visit <http://l.tesa.com/?ip=75415>



tesa[®] 75415

Product Information

Product Assortment

- Available thicknesses 50µm, 100µm, 150µm

Properties/Performance Values

- | | | | |
|-----------------------------------|-----------|-------------------------------------|--------|
| • Ageing resistance (UV) | very good | • Temperature resistance long term | 90 °C |
| • Static shear resistance at 23°C | good | • Temperature resistance short term | 140 °C |
| • Static shear resistance at 40°C | good | | |

Adhesion to Values

- | | | | |
|----------------------------|-----------|------------------------|-----------|
| • Aluminium (initial) | 9 N/cm | • PC (initial) | 14.4 N/cm |
| • Aluminium (after 3 days) | 12.1 N/cm | • PC (after 3 days) | 16.6 N/cm |
| • Glass (initial) | 14.5 N/cm | • Steel (initial) | 14.1 N/cm |
| • Glass (after 3 days) | 14.6 N/cm | • Steel (after 3 days) | 15.6 N/cm |

Disclaimer

tesa[®] products prove their impressive quality day in, day out in demanding conditions and are regularly subjected to strict controls. All information and recommendations are provided to the best of our knowledge on the basis of our practical experience. Nevertheless tesa SE can make no warranties, express or implied, including, but not limited to any implied warranty of merchantability or fitness for a particular purpose. Therefore, the user is responsible for determining whether the tesa[®] product is fit for a particular purpose and suitable for the user's method of application. If you are in any doubt, our technical support staff will be glad to support you.

For latest information on this product please visit <http://l.tesa.com/?ip=75415>