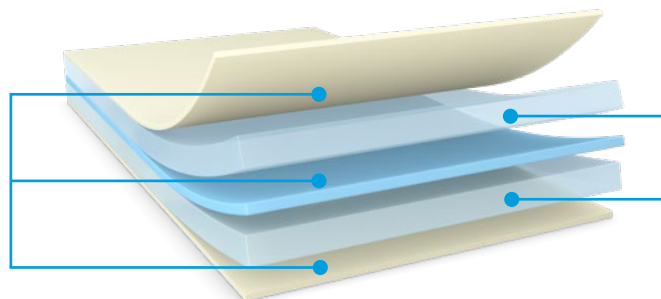




tesa[®] 6887x – Bio-based film tape

The new tesa[®] 6887x double-sided, bio-based film tape assortment consists of 75% bio-based carbon content adhesive and 100% post-consumer recycled (PCR) PET in backing and liner. This means that it not only meets your requirements in terms of tape performance, but also contributes to your sustainability agenda.

100% post-consumer recycled PET content in backing and liner



75% bio-based carbon content adhesive

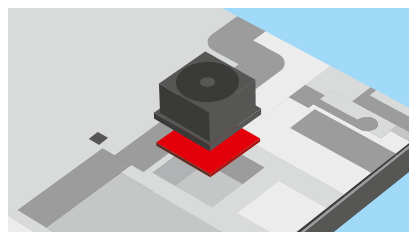
○ Liner ⊗ Adhesive ● Backing

Your benefits

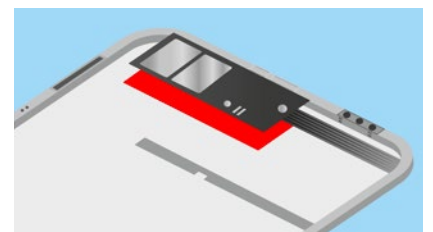
- Usage of our bio-based film tape can contribute to your sustainability agenda
- The high reliability of tesa[®] 6887x, even under harsh conditions, makes it an ideal fit for multiple applications in electronic devices



Cushioning material lamination



Component mounting



FPC fixation

Assortment overview

Characteristics

tesa® 6887x

Color	Transparent		
Adhesive	75% bio-based carbon content adhesive*		
Backing	12 µm, 100% PCR PET content in backing		
Liner	23/50 µm, double, 100% PCR PET content in liner		

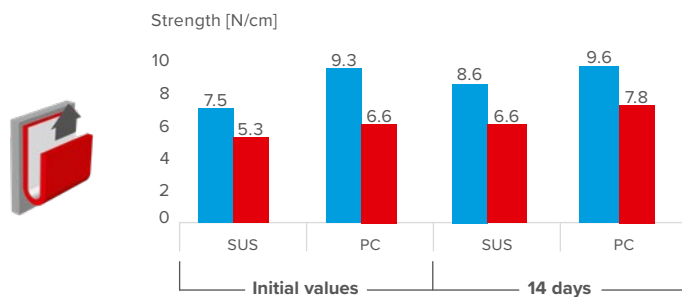
	tesa® 68873	tesa® 68875	tesa® 68877	
Thickness (µm)	30	50	100	
Bio-based content (%)*	40	53	63	
180° peel adhesion (in N/cm; initial value/ final value)**	SUS	6.2/7.9	7.5/8.6	9.6/11
	PC	6.6/7.3	9.3/9.6	11.3/11.8
	Glass	7.5/7.6	8.1/8.4	11.5/11.6

* based on ASTM D6866 test result without liner

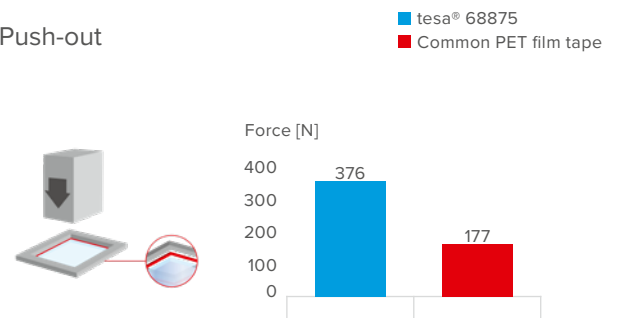
** based on ASTM D3330

Product comparison

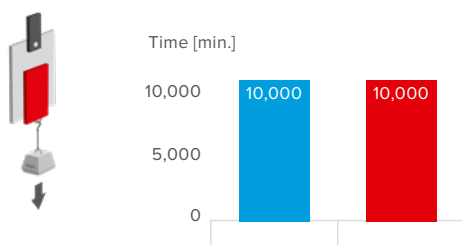
180° peel adhesion



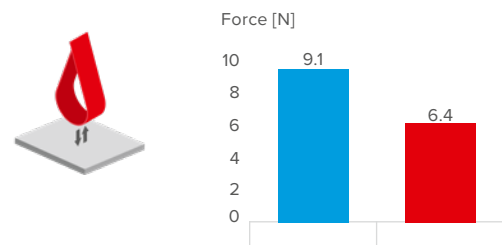
Push-out



Static shear



Loop tack



tesa SE
 Phone: +49 40 88899 0
tesa.com/company/locations

tesa® products prove their impressive quality day in, day out in demanding conditions and are regularly subjected to strict controls. All technical information and data above mentioned are provided to the best of our knowledge on the basis of our practical experience. They shall be considered as average values and are not appropriate for a specification. Therefore tesa SE can make no warranties, express or implied, including, but not limited to any implied warranty of merchantability or fitness for a particular purpose. The user is responsible for determining whether the tesa® product is fit for a particular purpose and suitable for the user's method of application. If you are in any doubt, our technical support staff will be glad to support you.