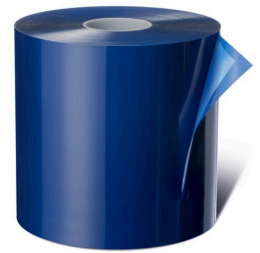


tesa® 58338

Product Information



Technical Information (average values)

The values in this section should be considered representative or typical only and should not be used for specification purposes.

Product Construction

• Backing	PET	• Total thickness	75 µm
• Type of adhesive	acrylic	• Color of liner	transparent
• Type of liner	PET	• Thickness of liner	23 µm

Properties/Performance Values

• Elongation at break	80 %	• CTI (adhesive side)	600 V
• Tensile strength	50 N/cm	• CTI (backing side)	400 V
• Breakdown voltage	7 KV	• Liner removal force	40 cN/cm

Adhesion to Values

• Steel	4.2 N/cm
---------	----------

Disclaimer

tesa® products prove their impressive quality day in, day out in demanding conditions and are regularly subjected to strict controls. All information and recommendations are provided to the best of our knowledge on the basis of our practical experience. Nevertheless tesa SE can make no warranties, express or implied, including, but not limited to any implied warranty of merchantability or fitness for a particular purpose. Therefore, the user is responsible for determining whether the tesa® product is fit for a particular purpose and suitable for the user's method of application. If you are in any doubt, our technical support staff will be glad to support you.



For latest information on this product please visit <http://l.tesa.com/?ip=58338PV2>