



MOUNTING TAPES



Mounted securely, wall undamaged

Screws, wall plugs and nails leave ugly holes in tiles, walls and painted surfaces. These double-sided mounting tapes give even heavy objects a secure hold.

Product Description

tesa® mounting tapes is a double-sided tape consisting of a conformable white closed cell PE-foam backing and a shear resistant modified acrylic adhesive. It is fully outdoor suitable.

tesa® mounting tapes features especially:

- High immediate bonding strength on rough surfaces
- Good compensation for design tolerances
- Leveling out of different thermal elongation of materials
- Shock absorption and sealing function

Properties

- Ageing resistance
- Humidity resistance
- Static shear resistance

Recommended usage of tesa MMT per KG mirror glass

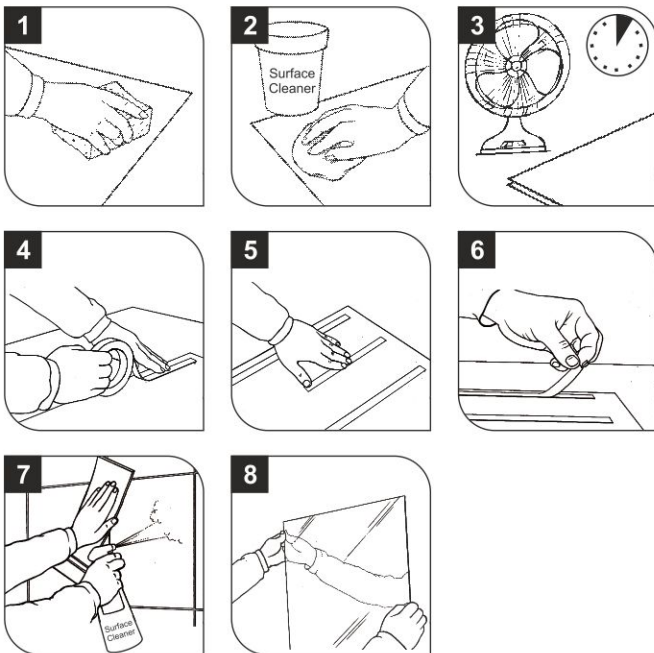
- 12mm width: 20 inches*
- 19mm width: 13 inches*
- 24mm width: 10 inches*



Mounting Applications



Mirror Mount Tape Directions For Use



*tesa® products prove their impressive quality day in, day out in demanding conditions and are regularly subjected to strict controls. All information and recommendations are provided to the best of our knowledge on the basis of our practical experience. Nevertheless tesa SE can make no warranties, express or implied, including, but not limited to any implied warranty of merchantability or fitness for a particular purpose. Therefore, the user is responsible for determining whether the tesa® product is fit for a particular purpose and suitable for the user's method of application. If you are in any doubt, our technical support staff will be glad to advise you.