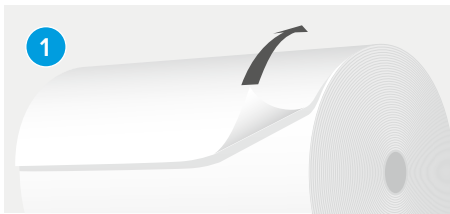
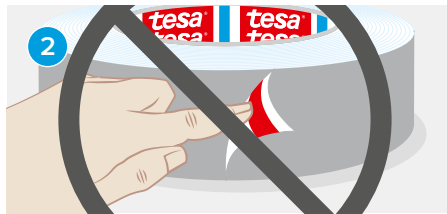


# Application guide

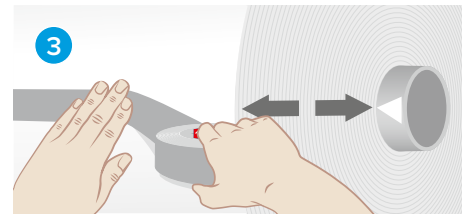
## tesa® EasySplice for film converting industries



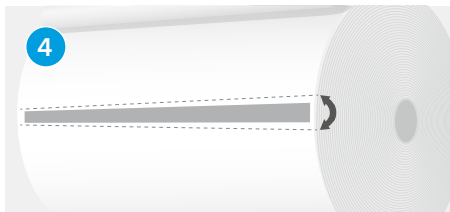
1 Fold back the top layer.



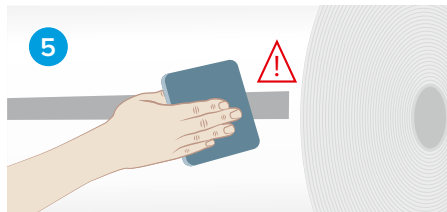
2 Do not touch the exposed adhesive on the reverse side of the tape.



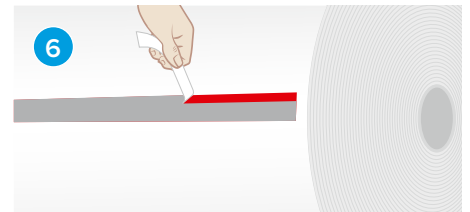
3 Position the tape on the mark of the axis or on other marks given.



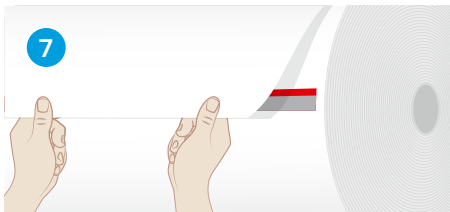
4 Apply the tape at a slight angle and leave a space on either side of the reel (10 mm/~0.5").



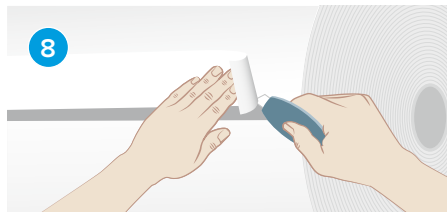
5 It is important to apply pressure on the tape to ensure excellent adhesion. Use a squeegee for best results.



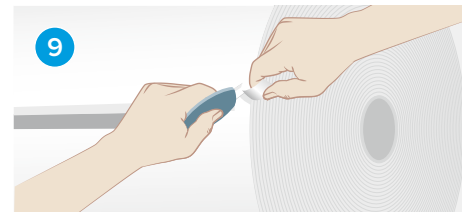
6 Remove the narrow part of the liner, pulling upwards.



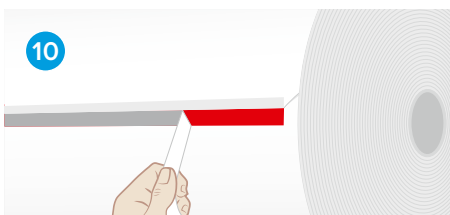
7 Pull the top sheet tightly over the exposed adhesive.



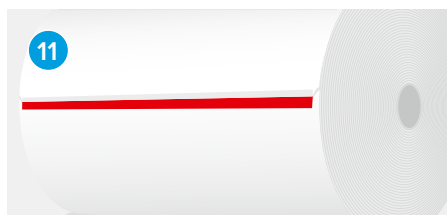
8 Fold back and cut away the excess material.



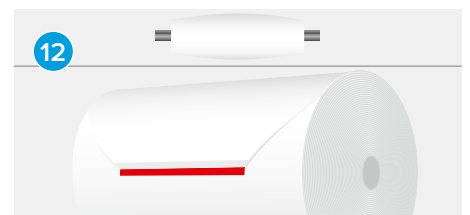
9 Trim both edges and remove all material which may flutter during acceleration.



10 Remove the wider part of the liner, pulling downwards.



11 Reel is ready to splice.



12 In case of a belly-shaped bump roller, trim the edges further, to avoid them fluttering.