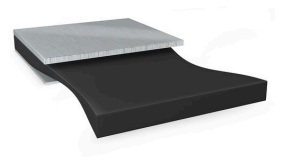




# tesa® 70680

## Product Information



800µm double-sided black bond and detach

## Product Description

tesa® 70680 is a double-sided mounting tape in black which can be removed by stretching the adhesive

## Product Features

- Thickness: 800µm
- Light blocking
- Superior bonding strength
- Very high push out and shock resistance
- Easy removability even after long bonding time

## Application Fields

- Battery mounting
- Permanent mounting of components in electronic devices with the option to remove the parts for repairing or recycling
- Temporary fixation of components
- Light blocking in displays and mobile phone applications

## Technical Information (average values)

The values in this section should be considered representative or typical only and should not be used for specification purposes.

## Product Construction

- |                    |           |                      |       |
|--------------------|-----------|----------------------|-------|
| • Backing material | none      | • Colour             | black |
| • Type of adhesive | specialty | • Colour of liner    | brown |
| • Type of liner    | glassine  | • Thickness of liner | 72 µm |
| • Total thickness  | 800 µm    |                      |       |

## Properties/Performance Values

- |                                     |           |  |           |
|-------------------------------------|-----------|--|-----------|
| • Removability after 14 days (23°C) | very good | • Static shear resistance at 40°C            | very good |
| • Residue free removal              | yes       | • Temperature resistance long term duration  | 60 °C     |
| • Solvent free                      | yes       | • Temperature resistance short term duration | 90 °C     |
| • Static shear resistance at 23°C   | very good |  |           |



# tesa® 70680

## Product Information

### Adhesion to Values

|                             |         |                         |         |
|-----------------------------|---------|-------------------------|---------|
| • Aluminium (initial)       | 18 N/cm | • PE (initial)          | 12 N/cm |
| • Aluminium (after 14 days) | 18 N/cm | • PE (after 14 days)    | 12 N/cm |
| • Magnesium (initial)       | 15 N/cm | • Steel (initial)       | 24 N/cm |
| • Magnesium (after 14 days) | 15 N/cm | • Steel (after 14 days) | 24 N/cm |

### Additional Information

- Permanent mounting of components in electronic devices with easy removal option
- Temporary fixation of components in electronic devices during the production process
- Screen mounting in Notebooks and All-In-One-PCs

## Disclaimer

tesa® products prove their impressive quality day in, day out in demanding conditions and are regularly subjected to strict controls. All information and recommendations are provided to the best of our knowledge on the basis of our practical experience. Nevertheless tesa SE can make no warranties, express or implied, including, but not limited to any implied warranty of merchantability or fitness for a particular purpose. Therefore, the user is responsible for determining whether the tesa® product is fit for a particular purpose and suitable for the user's method of application. If you are in any doubt, our technical support staff will be glad to support you.



For latest information on this product please visit <http://l.tesa.com/?ip=70680>