

# About us

We are a reliable partner for the railway industry

**We are a partner you can count on**

It is our business to support you and your products during the entire product-development process on a daily basis. Our numerous sales offices, our research and development department, and our production facilities offer worldwide assistance wherever our customers are located. Whether the adhesive tape is needed for masking while painting, mounting or fixating, surface protection, vibration and noise damping, or any form of floor fixing: tesa adhesive tapes offer you a complete solution for your application in the railway industry.

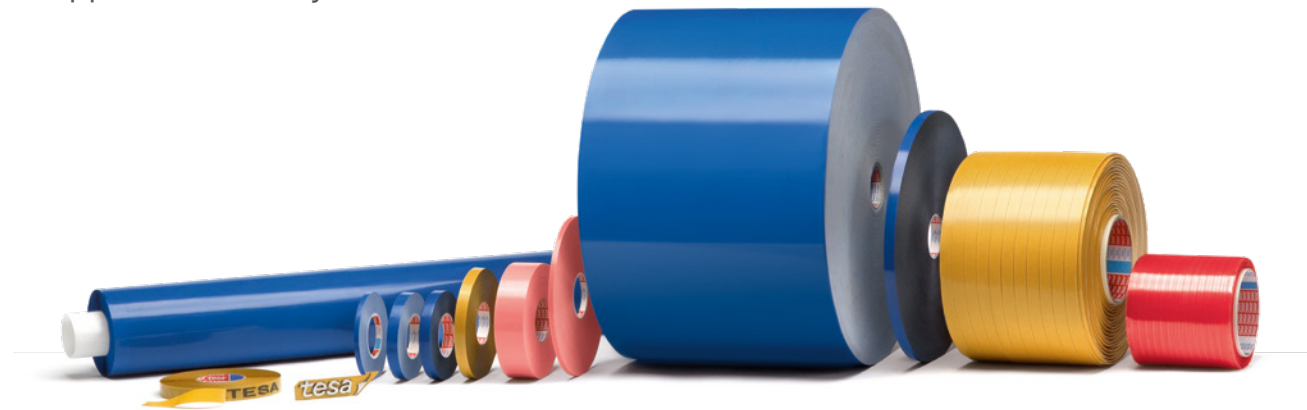
No matter what your production process or how you want to apply your tape: we deliver the tape in the format you need for your application.



**Our tape assortment offers you:**

- Wide variety of products for different applications
- Specific solutions for your individual process needs
- Fast and flexible implementation
- High production efficiency
- Rolls, die-cuts, and dispensers

Global support for mobility on rails



tesa® products prove their impressive quality day in, day out in demanding conditions and are regularly subjected to strict controls. All technical information and data above mentioned are provided to the best of our knowledge on the basis of our practical experience. They shall be considered as average values and are not appropriate for a specification. Therefore tesa SE can make no warranties, express or implied, including, but not limited to any implied warranty of merchantability or fitness for a particular purpose. The user is responsible for determining whether the tesa® product is fit for a particular purpose and suitable for the user's method of application. If you are in any doubt, our technical support staff will be glad to support you.



**Certifications**

Our company is focused on international quality, environmental, and occupational safety standards.

Please find more information regarding our certifications at:  
[www.tesa.com/certifications](http://www.tesa.com/certifications)

tesa SE  
Phone: +49 40 88899 0  
[tesa.com/company/locations](http://tesa.com/company/locations)

[tesa.com](http://tesa.com)



Moving  
technology



Our tapes for various railway applications



# Highest performance

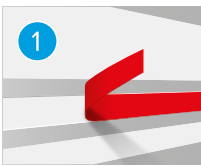
## Mobility on track

### Efficient adhesive solutions

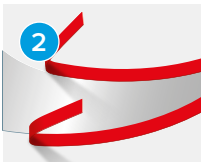
We offer a wide range of specially developed tapes that effectively meet the application requirements of the railway industry around the globe.

The result: an assortment of adhesives, liners, and backings providing custom bonding solutions for a diverse field of business. Our high quality tapes ensure an optimized solution that will speed up your processes and result in less reworking.

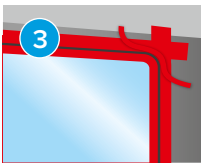
### Masking



**Straight-line masking**  
Sharp-edged masking of long straight lines, excellent for two-tone applications.



**Curved fine-line masking**  
Sharp-edged masking for complex and curved lines, good conformability to curves.



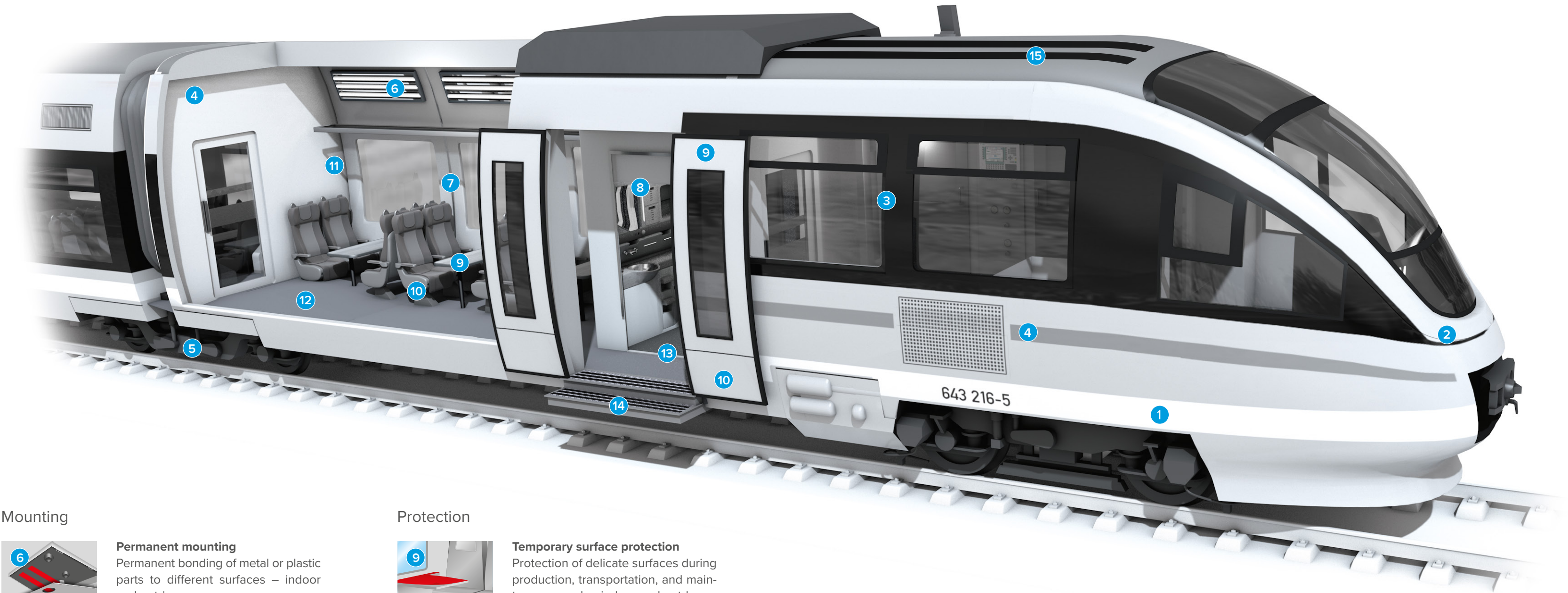
**Masking for sealing processes**  
Precise masking of window and railcar body for window-sealing processes.



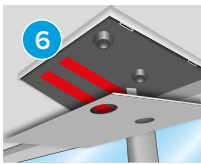
**Large-area masking**  
For fast, efficient, and simple covering of large areas.



**General masking**  
Covering of different parts during various processes – for example for sandblasting or painting processes.



### Mounting



**Permanent mounting**  
Permanent bonding of metal or plastic parts to different surfaces – indoor and outdoor.



**Pre-mounting of small parts**  
Preliminary bonding of small parts to ensure better positioning before mechanical fixing.

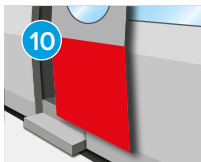


**Mirror mounting**  
Permanent fastening of mirror or glass panes on wall panels. Mechanical demounting of the tape is possible.

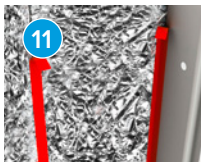
### Protection



**Temporary surface protection**  
Protection of delicate surfaces during production, transportation, and maintenance work – indoor and outdoor.

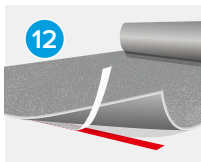


**Permanent surface protection**  
Permanent protection of exposed areas – indoor and outdoor.



**Insulation protection**  
Protection and fixation of insulation materials and body parts.

### Floor

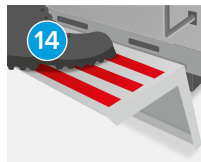


**Carpet fixing**  
Secure adhesion but easy removability for exchange of carpets with artificial floor coverings.



**Fixation of floor profiles**  
Permanent mounting of different floor profiles.

### Anti-slip



**Floor anti-slip**  
Ideal protection against slipping on steps or walkways.



**Roofing anti-slip**  
Ideal protection against slipping on the roof when maintenance work is necessary.

### Further applications

#### Sandblasting

Complete or partial masking of surfaces to protect against physical damage.

#### Powder coating

Masking of areas not to be coated during powder-coating processes.

#### Cable fixation/cable bundling

Attachment/bundling of cables during assembly processes or permanently.

#### Vibration and noise damping

Separating different types of materials to prevent rattling, friction, or squeaking – good noise damping properties.

#### Wire harnessing

Bundling of wires – also in combination with noise damping.

#### Identification labels/laser labels

Permanent identification or marking of individual components.

#### Floor marking

Permanent marking of dangerous or restricted zones.

#### General cloth-tape applications

Permanent protection of sensitive areas.