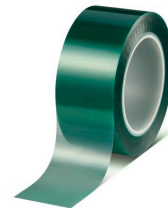




# tesa® 50620

## Product Information



### PET Masking Tape 200°C with Silicone Adhesive

#### Product Description

tesa® 50620 Basic powder coating tape is a green-translucent, high-temperature masking tape featuring a polyester backing with a silicone adhesive. tesa® 50620 is used for various applications, especially for masking during powder-coating processes and surface protection applications.

#### Product Features

- Residue-free removability for masking and surface protection applications
- The high-temperature tape features easy application and easy one-piece removal without leaving residues behind
- The tape enables sharp color edges and offers good paint anchorage.
- The masking tape's silicone adhesive system makes the tape heat-resistant, withstanding temperatures of up to 200°C for as long as 30 minutes at a time.

#### Application Fields

- tesa® 50620 is suited for masking off areas that are to be protected during general powder-coating applications
- The high-temperature tape can withstand temperatures of up to 200°C for 30 minutes
- tesa® 50620 is used for surface protection applications or bonding of non-polar materials
- The masking tape features residue-free removal

#### Technical Information (average values)

The values in this section should be considered representative or typical only and should not be used for specification purposes.

#### Product Construction

- |                    |          |                   |       |
|--------------------|----------|-------------------|-------|
| • Backing material | PET      | • Total thickness | 70 µm |
| • Type of adhesive | silicone |                   |       |

#### Properties/Performance Values

- |                                |         |                                   |        |
|--------------------------------|---------|-----------------------------------|--------|
| • Elongation at break          | 110 %   | • Hand tearability                | no     |
| • Tensile strength             | 75 N/cm | • Paint anchorage                 | good   |
| • Dielectric breakdown voltage | 4000 V  | • Sharp colour edge               | yes    |
| • Easy to remove               | yes     | • Temperature resistance (30 min) | 200 °C |

#### Adhesion to Values

- |         |          |
|---------|----------|
| • steel | 3.6 N/cm |
|---------|----------|



# tesa® 50620

## Product Information

### Disclaimer

tesa® products prove their impressive quality day in, day out in demanding conditions and are regularly subjected to strict controls. All information and recommendations are provided to the best of our knowledge on the basis of our practical experience. Nevertheless tesa SE can make no warranties, express or implied, including, but not limited to any implied warranty of merchantability or fitness for a particular purpose. Therefore, the user is responsible for determining whether the tesa® product is fit for a particular purpose and suitable for the user's method of application. If you are in any doubt, our technical support staff will be glad to support you.

For latest information on this product please visit <http://l.tesa.com/?ip=50620>