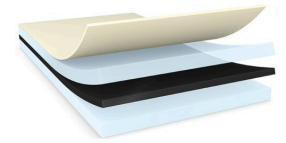




tesa® 61315

Product Information



300µm double sided black high performance filmic tape

Product Description

tesa® 61315 is a black, double sided self-adhesive tape consisting of a thick black PET backing and a tackified acrylic adhesive.

Product Features

- Thickness: 300µm
- Very high bonding strength
- Superior push out resistance
- High shock resistance
- Easy handling and processing performance due to very strong PET backing
- Excellent resistance to demanding environmental conditions
- Black colour for easy detection or design purposes

Application Fields

- Lens mounting in mobile phones
- Touch panel mounting

Technical Information (average values)

The values in this section should be considered representative or typical only and should not be used for specification purposes.

Product Construction

- | | | | |
|--------------------|-------------------|----------------------|----------------------|
| • Backing material | PET film | • Colour | black |
| • Type of adhesive | tackified acrylic | • Colour of liner | white with tesa logo |
| • Type of liner | glassine | • Thickness of liner | 71 µm |
| • Total thickness | 300 µm | • Weight of liner | 80 g/m ² |

Properties/Performance Values

- | | | | |
|-----------------------------------|--------------|--|--------------|
| • Elongation at break | 80 % | • Static shear resistance at 40°C | good, medium |
| • Tensile strength | 140 N/cm | • Tack | medium |
| • Ageing resistance (UV) | very good | • Temperature resistance long term duration | 100 °C |
| • Humidity resistance | very good | • Temperature resistance short term duration | 200 °C |
| • Static shear resistance at 23°C | good, medium | | |



tesa[®] 61315

Product Information

Adhesion to Values

• ABS (initial)	16 N/cm	• PC (after 14 days)	24 N/cm
• ABS (after 14 days)	19.5 N/cm	• PMMA (initial)	22 N/cm
• Glass (initial)	22 N/cm	• PMMA (after 14 days)	25 N/cm
• Glass (after 14 days)	23 N/cm	• Steel (initial)	20.3 N/cm
• PC (initial)	22 N/cm	• Steel (after 14 days)	24 N/cm

Disclaimer

tesa[®] products prove their impressive quality day in, day out in demanding conditions and are regularly subjected to strict controls. All information and recommendations are provided to the best of our knowledge on the basis of our practical experience. Nevertheless tesa SE can make no warranties, express or implied, including, but not limited to any implied warranty of merchantability or fitness for a particular purpose. Therefore, the user is responsible for determining whether the tesa[®] product is fit for a particular purpose and suitable for the user's method of application. If you are in any doubt, our technical support staff will be glad to support you.



For latest information on this product please visit <http://l.tesa.com/?ip=61315>