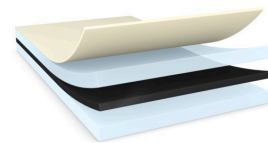




tesa® 61395

Product Information



Technical Information (average values)

The values in this section should be considered representative or typical only and should not be used for specification purposes.

Product Construction

• Backing material	PET film	• Colour	black
• Type of adhesive	tackified acrylic	• Colour of liner	white with tesa logo
• Type of liner	glassine	• Thickness of liner	69 µm
• Total thickness	200 µm	• Weight of liner	80 g/m ²

Properties/Performance Values

• Elongation at break	50 %	• Static shear resistance at 23°C	good
• Tensile strength	20 N/cm	• Static shear resistance at 40°C	good
• Ageing resistance (UV)	very good	• Temperature resistance long term duration	100 °C
• Humidity resistance	very good	• Temperature resistance short term duration	200 °C

Adhesion to Values

• ABS (initial)	10 N/cm	• PC (covered side, after 14 days)	19.5 N/cm
• ABS (after 14 days)	13.3 N/cm	• PC (covered side, initial)	11.6 N/cm
• ABS (covered side, after 14 days)	13.5 N/cm	• PMMA (initial)	14.2 N/cm
• ABS (covered side, initial)	10.4 N/cm	• PMMA (after 14 days)	19.2 N/cm
• Glass (initial)	14.4 N/cm	• Steel (initial)	14.3 N/cm
• Glass (after 14 days)	16.7 N/cm	• Steel (after 14 days)	17 N/cm
• PC (initial)	11.6 N/cm	• Steel (covered side, after 14 days)	17 N/cm
• PC (after 14 days)	19.8 N/cm	• Steel (covered side, initial)	14.8 N/cm

Disclaimer

tesa® products prove their impressive quality day in, day out in demanding conditions and are regularly subjected to strict controls. All information and recommendations are provided to the best of our knowledge on the basis of our practical experience. Nevertheless tesa SE can make no warranties, express or implied, including, but not limited to any implied warranty of merchantability or fitness for a particular purpose. Therefore, the user is responsible for determining whether the tesa® product is fit for a particular purpose and suitable for the user's method of application. If you are in any doubt, our technical support staff will be glad to support you.